

Anti-CNTN2 antibody (80-160 N-Term) (STJ92418)

STJ92418

GENERAL INFORMATION

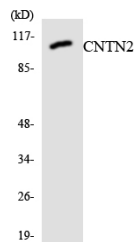
Product Type	Primary antibodies
Short Description	Rabbit polyclonal antibody anti-Contactin-2 (80-160 N-Term) is suitable for use in Western Blot and ELISA research applications.
Applications	WB, ELISA
Host/Source	Rabbit
Reactivity	Human, Mouse, Rat

PRODUCT PROPERTIES

Clonality	Polyclonal
Clone ID	
Concentration	1 mg/mL
Conjugation	Unconjugated
Purification	The antibody was affinity-purified from rabbit anti-serum by affinity-chromatography.
Dilution Range	WB 1:500-1:2000 ELISA 1:40000
Formulation	PBS, 50% Glycerol, 0.5% BSA and 0.02% Sodium Azide.
Isotype	IgG
Storage Instruction	Store at -20°C for up to 1 year from the date of receipt, and avoid repeat freeze-thaw cycles.

TARGET INFORMATION

Gene ID	6900
Gene Symbol	CNTN2
Uniprot ID	CNTN2_HUMAN
Immunogen	The antiserum was produced against synthesized peptide derived from human CNTN2 at amino acid range 111-160
Immunogen Region	80-160 N-Term
Specificity	CNTN2 polyclonal antibody (Contactin-2) binds to endogenous Contactin-2 at the amino acid region 80-160 N-Term.
Immunogen Sequence	



Western blot analysis of the lysates from HUVEC cells using CNTN2 antibody.

This product is suitable for in-vitro studies under the RESEARCH USE ONLY [RUO] licence. This product must not be used as for diagnostic or other medical purposes.
St John's Laboratory Ltd, Knowledge Dock Business Centre, University Way, London, E16 2RD | Tel: 0208 223 3081