

Anti-GJA3 antibody (120-200 Internal) (STJ92413)

STJ92413

GENERAL INFORMATION

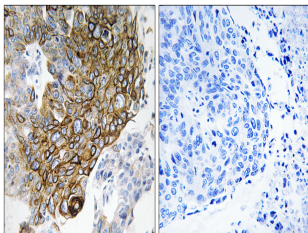
| | |
|--------------------------|--|
| Product Type | Primary antibodies |
| Short Description | Rabbit polyclonal antibody anti-Gap Junction Alpha-3 Protein (120-200 Internal) is suitable for use in Immunohistochemistry, Immunofluorescence and ELISA research applications. |
| Applications | IHC-P, IF-P, ELISA |
| Host/Source | Rabbit |
| Reactivity | Human, Mouse, Rat |

PRODUCT PROPERTIES

| | |
|-----------------------|--|
| Clonality | Polyclonal |
| Clone ID | |
| Concentration | 1 mg/mL |
| Conjugation | Unconjugated |
| Purification | The antibody was affinity-purified from rabbit anti-serum by affinity-chromatography. |
| Dilution Range | IHC 1:100-1:300 ELISA 1:20000 |
| Formulation | PBS, 50% Glycerol, 0.5% BSA and 0.02% Sodium Azide. |
| Isotype | IgG |
| Storage | Store at -20°C for up to 1 year from the date of receipt, and avoid repeat freeze-thaw cycles. |
| Instruction | |

TARGET INFORMATION

| | |
|---------------------------|---|
| Gene ID | 2700 |
| Gene Symbol | GJA3 |
| Uniprot ID | CXA3_HUMAN |
| Immunogen | The antiserum was produced against synthesized peptide derived from human GJA3 at amino acid range 151-200 |
| Immunogen Region | 120-200 Internal |
| Specificity | GJA3 polyclonal antibody (Gap Junction Alpha-3 Protein) binds to endogenous Gap Junction Alpha-3 Protein at the amino acid region 120-200 Internal. |
| Immunogen Sequence | |



Immunohistochemistry analysis of paraffin-embedded human lung carcinoma tissue, using GJA3 Antibody. The picture on the right is blocked with the synthesized peptide.