

Anti-GJC1 antibody (200-280 Internal) (STJ92412)

STJ92412

GENERAL INFORMATION

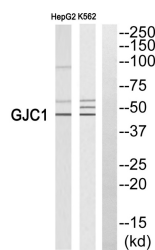
Product Type	Primary antibodies
Short Description	Rabbit polyclonal antibody anti-Gap Junction Gamma-1 Protein (200-280 Internal) is suitable for use in Western Blot and ELISA research applications.
Applications	WB, ELISA
Host/Source	Rabbit
Reactivity	Human, Mouse, Rat

PRODUCT PROPERTIES

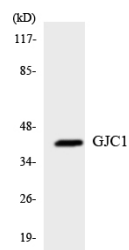
Clonality	Polyclonal
Clone ID	
Concentration	1 mg/mL
Conjugation	Unconjugated
Purification	The antibody was affinity-purified from rabbit anti-serum by affinity-chromatography.
Dilution Range	WB 1:500-1:2000 ELISA 1:40000
Formulation	PBS, 50% Glycerol, 0.5% BSA and 0.02% Sodium Azide.
Isotype	IgG
Storage	Store at -20°C for up to 1 year from the date of receipt, and avoid repeat freeze-thaw cycles.
Instruction	

TARGET INFORMATION

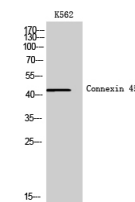
Gene ID	10052
Gene Symbol	GJC1
Uniprot ID	CXG1_HUMAN
Immunogen	The antiserum was produced against synthesized peptide derived from human GJC1 at amino acid range 231-280
Immunogen Region	200-280 Internal
Specificity	GJC1 polyclonal antibody (Gap Junction Gamma-1 Protein) binds to endogenous Gap Junction Gamma-1 Protein at the amino acid region 200-280 Internal.
Immunogen Sequence	



Western blot analysis of GJC1 Antibody. The lane on the right is blocked with the GJC1 peptide.



Western blot analysis of the lysates from K562 cells using GJC1 antibody.



Western blot analysis of K562 cells using Connexin 45 Polyclonal Antibody

This product is suitable for in-vitro studies under the RESEARCH USE ONLY [RUO] licence. This product must not be used as for diagnostic or other medical purposes.
St John's Laboratory Ltd, Knowledge Dock Business Centre, University Way, London, E16 2RD | Tel: 0208 223 3081