

Anti-GJB7 antibody (40-120 Internal) (STJ92406)

STJ92406

GENERAL INFORMATION

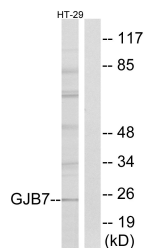
Product Type	Primary antibodies
Short Description	Rabbit polyclonal antibody anti-Gap Junction Beta-7 Protein (40-120 Internal) is suitable for use in Western Blot and ELISA research applications.
Applications	WB, ELISA
Host/Source	Rabbit
Reactivity	Human, Rat, Mouse

PRODUCT PROPERTIES

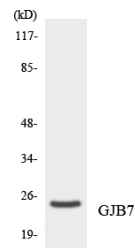
Clonality	Polyclonal
Clone ID	
Concentration	1 mg/mL
Conjugation	Unconjugated
Purification	The antibody was affinity-purified from rabbit anti-serum by affinity-chromatography.
Dilution Range	WB 1:500-1:2000 ELISA 1:10000
Formulation	PBS, 50% Glycerol, 0.5% BSA and 0.02% Sodium Azide.
Isotype	IgG
Storage	Store at -20°C for up to 1 year from the date of receipt, and avoid repeat freeze-thaw cycles.
Instruction	

TARGET INFORMATION

Gene ID	375519
Gene Symbol	GJB7
Uniprot ID	CXB7_HUMAN
Immunogen	The antiserum was produced against synthesized peptide derived from human GJB7 at amino acid range 21-70
Immunogen Region	40-120 Internal
Specificity	GJB7 polyclonal antibody (Gap Junction Beta-7 Protein) binds to endogenous Gap Junction Beta-7 Protein at the amino acid region 40-120 Internal.
Immunogen Sequence	



Western blot analysis of lysates from HT-29 cells, using GJB7 Antibody. The lane on the right is blocked with the synthesized peptide.



Western blot analysis of the lysates from HeLa cells using GJB7 antibody.



Western blot analysis of various cells using Connexin 25 Polyclonal Antibody diluted at 1: 500

This product is suitable for in-vitro studies under the RESEARCH USE ONLY [RUO] licence. This product must not be used as for diagnostic or other medical purposes.
St John's Laboratory Ltd, Knowledge Dock Business Centre, University Way, London, E16 2RD | Tel: 0208 223 3081