

Anti-COMT antibody (30-110 Internal) (STJ92405)

STJ92405

GENERAL INFORMATION

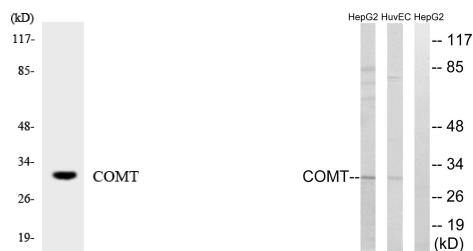
Product Type	Primary antibodies
Short Description	Rabbit polyclonal antibody anti-Catechol O-Methyltransferase (30-110 Internal) is suitable for use in Western Blot and ELISA research applications.
Applications	WB, ELISA
Host/Source	Rabbit
Reactivity	Human, Rat, Mouse

PRODUCT PROPERTIES

Clonality	Polyclonal
Clone ID	
Concentration	1 mg/mL
Conjugation	Unconjugated
Purification	The antibody was affinity-purified from rabbit anti-serum by affinity-chromatography.
Dilution Range	WB 1:500-1:2000 ELISA 1:20000
Formulation	PBS, 50% Glycerol, 0.5% BSA and 0.02% Sodium Azide.
Isotype	IgG
Storage	Store at -20°C for up to 1 year from the date of receipt, and avoid repeat freeze-thaw cycles.
Instruction	

TARGET INFORMATION

Gene ID	1312
Gene Symbol	COMT
Uniprot ID	COMT_HUMAN
Immunogen	The antiserum was produced against synthesized peptide derived from human COMT at amino acid range 61-110
Immunogen Region	30-110 Internal
Specificity	COMT polyclonal antibody (Catechol O-Methyltransferase) binds to endogenous Catechol O-Methyltransferase at the amino acid region 30-110 Internal.
Immunogen Sequence	



Western blot analysis of the lysates from Jurkat cells using COMT antibody.

Western blot analysis of lysates from HUVEC and HepG2 cells, using COMT Antibody. The lane on the right is blocked with the synthesized peptide.