

## Anti-COL6A3 antibody (2230-2310 Internal) (STJ92401)

STJ92401

### GENERAL INFORMATION

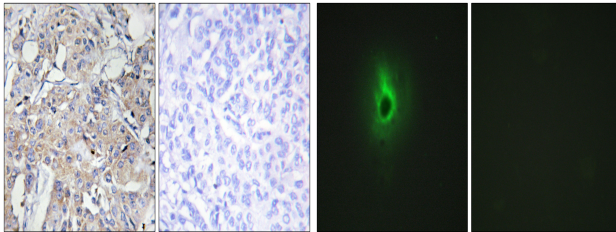
<b>Product Type</b>	Primary antibodies
<b>Short Description</b>	Rabbit polyclonal antibody anti-Collagen Alpha-3 (VI Chain (2230-2310 Internal) is suitable for use in Immunohistochemistry, Immunofluorescence, Immunocytochemistry and ELISA research applications.
<b>Applications</b>	IHC-P, IF, ICC, ELISA
<b>Host/Source</b>	Rabbit
<b>Reactivity</b>	Human, Mouse

### PRODUCT PROPERTIES

<b>Clonality</b>	Polyclonal
<b>Clone ID</b>	
<b>Concentration</b>	1 mg/mL
<b>Conjugation</b>	Unconjugated
<b>Purification</b>	The antibody was affinity-purified from rabbit anti-serum by affinity-chromatography.
<b>Dilution Range</b>	IHC 1:100-1:300 IF 1:200-1:1000 ELISA 1:40000
<b>Formulation</b>	PBS, 50% Glycerol, 0.5% BSA and 0.02% Sodium Azide.
<b>Isotype</b>	IgG
<b>Storage Instruction</b>	Store at -20°C for up to 1 year from the date of receipt, and avoid repeat freeze-thaw cycles.

### TARGET INFORMATION

<b>Gene ID</b>	1293
<b>Gene Symbol</b>	COL6A3
<b>Uniprot ID</b>	CO6A3_HUMAN
<b>Immunogen Region</b>	The antiserum was produced against synthesized peptide derived from human Collagen VI alpha3 at amino acid range 2261-2310
<b>Immunogen Region</b>	2230-2310 Internal
<b>Specificity</b>	COL6A3 polyclonal antibody (Collagen Alpha-3 (VI Chain) binds to endogenous Collagen Alpha-3 (VI Chain at the amino acid region 2230-2310 Internal.
<b>Immunogen Sequence</b>	



Immunohistochemistry analysis of paraffin-embedded human breast carcinoma tissue, using Collagen VI alpha3 Antibody. The picture on the right is blocked with the synthesized peptide.

Immunofluorescence analysis of HeLa cells, using Collagen VI alpha3 Antibody. The picture on the right is blocked with the synthesized peptide.

This product is suitable for in-vitro studies under the RESEARCH USE ONLY [RUO] licence. This product must not be used as for diagnostic or other medical purposes.  
St John's Laboratory Ltd, Knowledge Dock Business Centre, University Way, London, E16 2RD | Tel: 0208 223 3081