

Anti-COL6A2 antibody (660-740 Internal) (STJ92400)

STJ92400

GENERAL INFORMATION

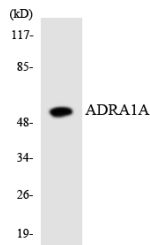
Product Type	Primary antibodies
Short Description	Rabbit polyclonal antibody anti-Collagen Alpha-2 (Vi Chain (660-740 Internal) is suitable for use in Western Blot, Immunohistochemistry, Immunofluorescence, Immunocytochemistry and ELISA research applications.
Applications	WB, IHC-P, IF, ICC, ELISA
Host/Source	Rabbit
Reactivity	Human, Mouse, Monkey

PRODUCT PROPERTIES

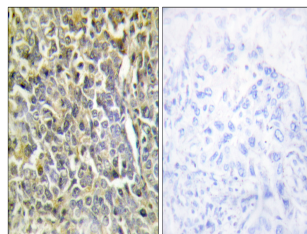
Clonality	Polyclonal
Clone ID	
Concentration	1 mg/mL
Conjugation	Unconjugated
Purification	The antibody was affinity-purified from rabbit anti-serum by affinity-chromatography.
Dilution Range	WB 1:500-1:2000 IHC 1:100-1:300 IF 1:200-1:1000 ELISA 1:10000
Formulation	PBS, 50% Glycerol, 0.5% BSA and 0.02% Sodium Azide.
Isotype	IgG
Storage Instruction	Store at -20°C for up to 1 year from the date of receipt, and avoid repeat freeze-thaw cycles.

TARGET INFORMATION

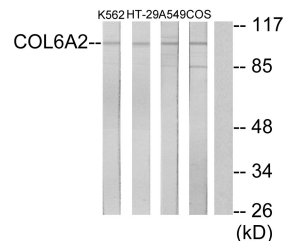
Gene ID	1292
Gene Symbol	COL6A2
Uniprot ID	CO6A2_HUMAN
Immunogen	The antiserum was produced against synthesized peptide derived from human Collagen VI alpha2 at amino acid range 691-740
Immunogen Region	660-740 Internal
Specificity	COL6A2 polyclonal antibody (Collagen Alpha-2 (Vi Chain) binds to endogenous Collagen Alpha-2 (Vi Chain at the amino acid region 660-740 Internal.
Immunogen Sequence	



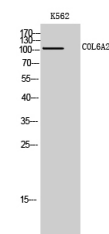
Western blot analysis of the lysates from HUVEC cells using ADRA1A antibody.



Immunohistochemistry analysis of paraffin-embedded human lung carcinoma tissue, using Collagen VI alpha2 Antibody. The picture on the right is blocked with the synthesized peptide.



Western blot analysis of lysates from K562, A549, HT-29, and COS7 cells, using Collagen VI alpha2 Antibody. The lane on the right is blocked with the synthesized peptide.



Western blot analysis of K562 cells using COL6A2 Polyclonal Antibody