

Anti-COL6A1 antibody (160-240 Internal) (STJ92399)

STJ92399

GENERAL INFORMATION

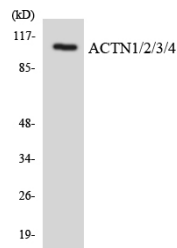
Product Type	Primary antibodies
Short Description	Rabbit polyclonal antibody anti-Collagen Alpha-1 (Vi Chain (160-240 Internal) is suitable for use in Immunohistochemistry, Immunofluorescence and ELISA research applications.
Applications	IHC-P, IF-P, ELISA
Host/Source	Rabbit
Reactivity	Human, Mouse

PRODUCT PROPERTIES

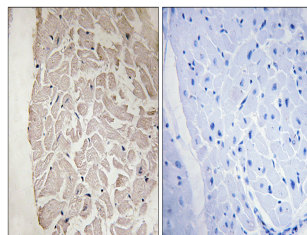
Clonality	Polyclonal
Clone ID	
Concentration	1 mg/mL
Conjugation	Unconjugated
Purification	The antibody was affinity-purified from rabbit anti-serum by affinity-chromatography.
Dilution Range	IHC 1:100-1:300 ELISA 1:10000
Formulation	PBS, 50% Glycerol, 0.5% BSA and 0.02% Sodium Azide.
Isotype	IgG
Storage	Store at -20°C for up to 1 year from the date of receipt, and avoid repeat freeze-thaw cycles.
Instruction	

TARGET INFORMATION

Gene ID	1291
Gene Symbol	COL6A1
Uniprot ID	CO6A1_HUMAN
Immunogen	The antiserum was produced against synthesized peptide derived from human Collagen VI alpha1 at amino acid range 191-240
Immunogen Region	160-240 Internal
Specificity	COL6A1 polyclonal antibody (Collagen Alpha-1 (Vi Chain) binds to endogenous Collagen Alpha-1 (Vi Chain at the amino acid region 160-240 Internal.
Immunogen Sequence	



Western blot analysis of the lysates from COLO205 cells using ACTN1/2/3/4 antibody.



Immunohistochemistry analysis of paraffin-embedded human heart tissue, using Collagen VI alpha1 Antibody. The picture on the right is blocked with the synthesized peptide.

This product is suitable for in-vitro studies under the RESEARCH USE ONLY [RUO] licence. This product must not be used as for diagnostic or other medical purposes.
St John's Laboratory Ltd, Knowledge Dock Business Centre, University Way, London, E16 2RD | Tel: 0208 223 3081