

## Anti-COL4A6 antibody (1170-1250 C-Term) (STJ92394)

STJ92394

### GENERAL INFORMATION

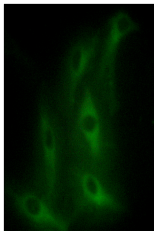
<b>Product Type</b>	Primary antibodies
<b>Short Description</b>	Rabbit polyclonal antibody anti-Collagen Alpha-6 (Iv Chain (1170-1250 C-Term) is suitable for use in Western Blot, Immunohistochemistry, Immunofluorescence, Immunocytochemistry and ELISA research applications.
<b>Applications</b>	WB, IHC-P, IF, ICC, ELISA
<b>Host/Source</b>	Rabbit
<b>Reactivity</b>	Human, Rat, Mouse

### PRODUCT PROPERTIES

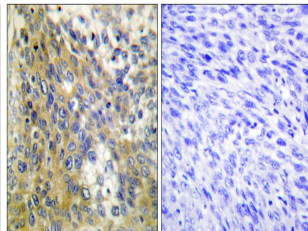
<b>Clonality</b>	Polyclonal
<b>Clone ID</b>	
<b>Concentration</b>	1 mg/mL
<b>Conjugation</b>	Unconjugated
<b>Purification</b>	The antibody was affinity-purified from rabbit anti-serum by affinity-chromatography.
<b>Dilution Range</b>	WB 1:500-1:2000 IHC 1:100-1:300 IF 1:200-1:1000 ELISA 1:40000
<b>Formulation</b>	PBS, 50% Glycerol, 0.5% BSA and 0.02% Sodium Azide.
<b>Isotype</b>	IgG
<b>Storage Instruction</b>	Store at -20°C for up to 1 year from the date of receipt, and avoid repeat freeze-thaw cycles.

### TARGET INFORMATION

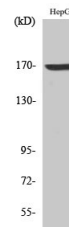
<b>Gene ID</b>	1288
<b>Gene Symbol</b>	COL4A6
<b>Uniprot ID</b>	CO4A6_HUMAN
<b>Immunogen</b>	The antiserum was produced against synthesized peptide derived from human Collagen IV alpha6 at amino acid range 1201-1250
<b>Immunogen Region</b>	1170-1250 C-Term
<b>Specificity</b>	COL4A6 polyclonal antibody (Collagen Alpha-6 (Iv Chain) binds to endogenous Collagen Alpha-6 (Iv Chain at the amino acid region 1170-1250 C-Term.
<b>Immunogen Sequence</b>	



Immunofluorescence analysis of HeLa cells, using Collagen IV alpha6 Antibody. The picture on the right is blocked with the synthesized peptide.



Immunohistochemistry analysis of paraffin-embedded human cervix carcinoma tissue, using Collagen IV alpha6 Antibody. The picture on the right is blocked with the synthesized peptide.



Western blot analysis of various cells using COL4A6 Polyclonal Antibody diluted at 1: 500

This product is suitable for in-vitro studies under the RESEARCH USE ONLY [RUO] licence. This product must not be used as for diagnostic or other medical purposes.  
St John's Laboratory Ltd, Knowledge Dock Business Centre, University Way, London, E16 2RD | Tel: 0208 223 3081