

## Anti-COL4A1 antibody (30-110 N-Term) (STJ92389)

STJ92389

### GENERAL INFORMATION

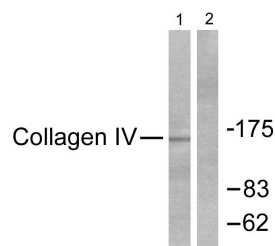
|                          |   |
|--------------------------|---|
| <b>Product Type</b>      | Primary antibodies  |
| <b>Short Description</b> | Rabbit polyclonal antibody anti-Collagen Alpha-1 (Iv Chain Cleaved Into-Arresten (30-110 N-Term) is suitable for use in Western Blot, Immunohistochemistry, Immunofluorescence and ELISA research applications. |
| <b>Applications</b>      | WB, IHC-P, IF-P, ELISA  |
| <b>Host/Source</b>       | Rabbit  |
| <b>Reactivity</b>        | Human, Mouse  |

### PRODUCT PROPERTIES

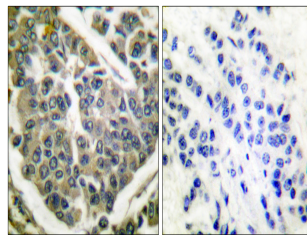
|                            |  |
|----------------------------|--|
| <b>Clonality</b>           | Polyclonal   |
| <b>Clone ID</b>            |  |
| <b>Concentration</b>       | 1 mg/mL  |
| <b>Conjugation</b>         | Unconjugated   |
| <b>Purification</b>        | The antibody was affinity-purified from rabbit anti-serum by affinity-chromatography.          |
| <b>Dilution Range</b>      | WB 1:500-1:2000<br>IHC 1:100-1:300<br>ELISA 1:20000  |
| <b>Formulation</b>         | PBS, 50% Glycerol, 0.5% BSA and 0.02% Sodium Azide.  |
| <b>Isotype</b>             | IgG  |
| <b>Storage Instruction</b> | Store at -20°C for up to 1 year from the date of receipt, and avoid repeat freeze-thaw cycles. |

### TARGET INFORMATION

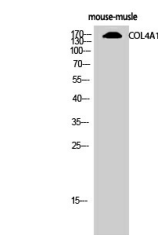
|                           |  |
|---------------------------|--|
| <b>Gene ID</b>            | 1282   |
| <b>Gene Symbol</b>        | COL4A1   |
| <b>Uniprot ID</b>         | CO4A1_HUMAN  |
| <b>Immunogen Region</b>   | The antiserum was produced against synthesized peptide derived from human Collagen IV at amino acid range 11-60  |
| <b>Immunogen Region</b>   | 30-110 N-Term  |
| <b>Specificity</b>        | COL4A1 polyclonal antibody (Collagen Alpha-1 (Iv Chain Cleaved Into-Arresten) binds to endogenous Collagen Alpha-1 (Iv Chain Cleaved Into-Arresten at the amino acid region 30-110 N-Term. |
| <b>Immunogen Sequence</b> |  |



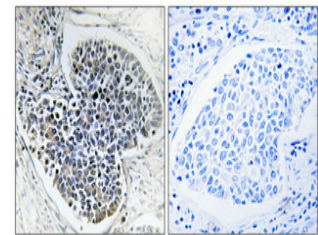
Western blot analysis of lysates from HeLa cells, using Collagen IV Antibody. The lane on the right is blocked with the synthesized peptide.



Immunohistochemistry analysis of paraffin-embedded human breast carcinoma tissue, using Collagen IV Antibody. The picture on the right is blocked with the synthesized peptide.



Western blot analysis of mouse-muscle cells using COL4A1 Polyclonal Antibody diluted at 1: 500



Immunohistochemical analysis of paraffin-embedded Human lung cancer. Antibody was diluted at 1:100 (4°C overnight). High-pressure and temperature Tris-EDTA, pH8.0 was used for antigen retrieval. Negative control (right) obtained from antibody was pre-absorbed by immunogen peptide.

This product is suitable for in-vitro studies under the RESEARCH USE ONLY [RUO] licence. This product must not be used as for diagnostic or other medical purposes.  
St John's Laboratory Ltd, Knowledge Dock Business Centre, University Way, London, E16 2RD | Tel: 0208 223 3081