

## Anti-COL25A1 antibody (70-150 Internal) (STJ92386)

STJ92386

### GENERAL INFORMATION

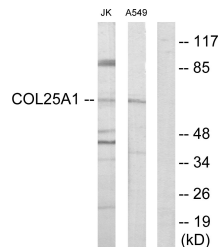
<b>Product Type</b>	Primary antibodies
<b>Short Description</b>	Rabbit polyclonal antibody anti-Collagen Alpha-1 (Xv Chain (70-150 Internal) is suitable for use in Western Blot, Immunohistochemistry, Immunofluorescence, Immunocytochemistry and ELISA research applications.
<b>Applications</b>	WB, IHC-P, IF, ICC, ELISA
<b>Host/Source</b>	Rabbit
<b>Reactivity</b>	Human, Mouse

### PRODUCT PROPERTIES

<b>Clonality</b>	Polyclonal
<b>Clone ID</b>	
<b>Concentration</b>	1 mg/mL
<b>Conjugation</b>	Unconjugated
<b>Purification</b>	The antibody was affinity-purified from rabbit anti-serum by affinity-chromatography.
<b>Dilution Range</b>	WB 1:500-1:2000 IHC 1:100-1:300 IF 1:200-1:1000 ELISA 1:20000
<b>Formulation</b>	PBS, 50% Glycerol, 0.5% BSA and 0.02% Sodium Azide.
<b>Isotype</b>	IgG
<b>Storage Instruction</b>	Store at -20°C for up to 1 year from the date of receipt, and avoid repeat freeze-thaw cycles.

### TARGET INFORMATION

<b>Gene ID</b>	84570
<b>Gene Symbol</b>	COL25A1
<b>Uniprot ID</b>	COPA1_HUMAN
<b>Immunogen</b>	The antiserum was produced against synthesized peptide derived from human Collagen XXV alpha1 at amino acid range 101-150
<b>Immunogen Region</b>	70-150 Internal
<b>Specificity</b>	COL25A1 polyclonal antibody (Collagen Alpha-1 (Xv Chain) binds to endogenous Collagen Alpha-1 (Xv Chain at the amino acid region 70-150 Internal.
<b>Immunogen Sequence</b>	



Western blot analysis of lysates from Jurkat and A549 cells, using Collagen XXV alpha1 Antibody. The lane on the right is blocked with the synthesized peptide.

This product is suitable for in-vitro studies under the RESEARCH USE ONLY [RUO] licence. This product must not be used as for diagnostic or other medical purposes.  
St John's Laboratory Ltd, Knowledge Dock Business Centre, University Way, London, E16 2RD | Tel: 0208 223 3081