

Anti-COL1A2 antibody (1-80 N-Term) (STJ92383)

STJ92383

GENERAL INFORMATION

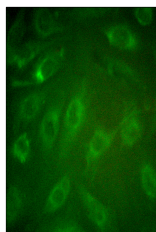
Product Type	Primary antibodies
Short Description	Rabbit polyclonal antibody anti-Collagen Alpha-2 (I Chain (1-80 N-Term) is suitable for use in Western Blot, Immunohistochemistry, Immunofluorescence, Immunocytochemistry and ELISA research applications.
Applications	WB, IHC-P, IF, ICC, ELISA
Host/Source	Rabbit
Reactivity	Human, Mouse, Rat

PRODUCT PROPERTIES

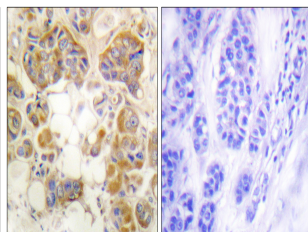
Clonality	Polyclonal
Clone ID	
Concentration	1 mg/mL
Conjugation	Unconjugated
Purification	The antibody was affinity-purified from rabbit anti-serum by affinity-chromatography.
Dilution	WB 1:500-2000
Range	IHC 1:100-1:300 IF 1:200-1:1000 ELISA 1:10000
Formulation	PBS, 50% Glycerol, 0.5% BSA and 0.02% Sodium Azide.
Isotype	IgG
Storage	Store at -20°C for up to 1 year from the date of receipt, and avoid repeat freeze-thaw cycles.
Instruction	

TARGET INFORMATION

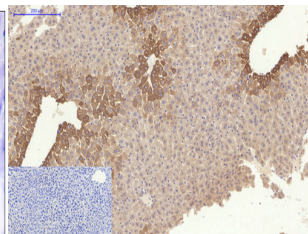
Gene ID	1278
Gene Symbol	COL1A2
Uniprot ID	CO1A2_HUMAN
Immunogen	The antiserum was produced against synthesized peptide derived from human Collagen I at amino acid range 1-50
Immunogen Region	1-80 N-Term
Specificity	COL1A2 polyclonal antibody (Collagen Alpha-2 (I Chain) binds to endogenous Collagen Alpha-2 (I Chain at the amino acid region 1-80 N-Term.
Immunogen Sequence	



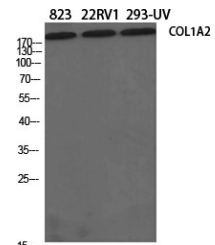
Immunofluorescence analysis of NIH/3T3 cells, using Collagen I Antibody. The picture on the right is blocked with the synthesized peptide.



Immunohistochemistry analysis of paraffin-embedded human breast carcinoma tissue, using Collagen I Antibody. The picture on the right is blocked with the synthesized peptide.



Immunohistochemical analysis of paraffin-embedded Mouse-liver tissue. 1. COL1A2 Polyclonal Antibody was diluted at 1:200 (4°C, overnight). 2. Sodium citrate pH 6.0 was used for antibody retrieval (>98°C, 20min). 3. Secondary antibody was diluted at 1:200 (room temperature, 30min). Negative control was used by secondary antibody only.



Western blot analysis of various cells using COL1A2 Polyclonal Antibody diluted at 1: 500

This product is suitable for in-vitro studies under the RESEARCH USE ONLY [RUO] licence. This product must not be used as for diagnostic or other medical purposes.

St John's Laboratory Ltd, Knowledge Dock Business Centre, University Way, London, E16 2RD | Tel: 0208 223 3081