

Anti-COL19A1 antibody (390-470 Internal) (STJ92382)

STJ92382

GENERAL INFORMATION

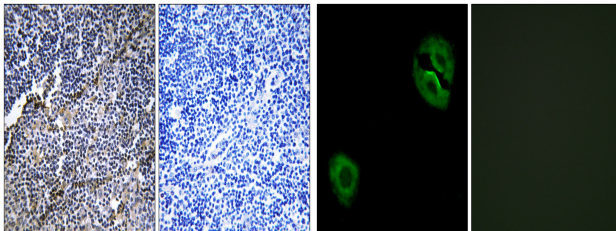
Product Type	Primary antibodies
Short Description	Rabbit polyclonal antibody anti-Collagen Alpha-1 (Xix Chain (390-470 Internal) is suitable for use in Western Blot, Immunohistochemistry, Immunofluorescence, Immunocytochemistry and ELISA research applications.
Applications	WB, IHC-P, IF, ICC, ELISA
Host/Source	Rabbit
Reactivity	Human, Rat, Mouse

PRODUCT PROPERTIES

Clonality	Polyclonal
Clone ID	
Concentration	1 mg/mL
Conjugation	Unconjugated
Purification	The antibody was affinity-purified from rabbit anti-serum by affinity-chromatography.
Dilution Range	WB 1:500-1:2000 IHC 1:100-1:300 IF 1:200-1:1000 ELISA 1:10000
Formulation	PBS, 50% Glycerol, 0.5% BSA and 0.02% Sodium Azide.
Isotype	IgG
Storage Instruction	Store at -20°C for up to 1 year from the date of receipt, and avoid repeat freeze-thaw cycles.

TARGET INFORMATION

Gene ID	1310
Gene Symbol	COL19A1
Uniprot ID	COJA1_HUMAN
Immunogen	The antiserum was produced against synthesized peptide derived from human Collagen XIX alpha1 at amino acid range 421-470
Immunogen Region	390-470 Internal
Specificity	COL19A1 polyclonal antibody (Collagen Alpha-1 (Xix Chain) binds to endogenous Collagen Alpha-1 (Xix Chain at the amino acid region 390-470 Internal.
Immunogen Sequence	



Immunohistochemistry analysis of paraffin-embedded human thymus gland tissue, using Collagen XIX alpha1 Antibody. The picture on the right is blocked with the synthesized peptide.

Immunofluorescence analysis of A549 cells, using Collagen XIX alpha1 Antibody. The picture on the right is blocked with the synthesized peptide.

This product is suitable for in-vitro studies under the RESEARCH USE ONLY [RUO] licence. This product must not be used as for diagnostic or other medical purposes.
St John's Laboratory Ltd, Knowledge Dock Business Centre, University Way, London, E16 2RD | Tel: 0208 223 3081