

## Anti-COL18A1 antibody (1270-1350 C-Term) (STJ92380)

STJ92380

### GENERAL INFORMATION

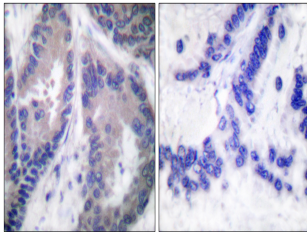
<b>Product Type</b>	Primary antibodies
<b>Short Description</b>	Rabbit polyclonal antibody anti-Collagen Alpha-1 (XVIII Chain Cleaved Into-Endostatin-Non-Collagenous Domain 1 (1270-1350 C-Term)) is suitable for use in Immunohistochemistry, Immunofluorescence and ELISA research applications.
<b>Applications</b>	IHC-P, IF-P, ELISA
<b>Host/Source</b>	Rabbit
<b>Reactivity</b>	Human, Mouse

### PRODUCT PROPERTIES

<b>Clonality</b>	Polyclonal
<b>Clone ID</b>	
<b>Concentration</b>	1 mg/mL
<b>Conjugation</b>	Unconjugated
<b>Purification</b>	The antibody was affinity-purified from rabbit anti-serum by affinity-chromatography.
<b>Dilution</b>	IHC 1:100-1:300
<b>Range</b>	ELISA 1:20000
<b>Formulation</b>	PBS, 50% Glycerol, 0.5% BSA and 0.02% Sodium Azide.
<b>Isotype</b>	IgG
<b>Storage Instruction</b>	Store at -20°C for up to 1 year from the date of receipt, and avoid repeat freeze-thaw cycles.

### TARGET INFORMATION

<b>Gene ID</b>	80781
<b>Gene Symbol</b>	COL18A1
<b>Uniprot ID</b>	CO1A1_HUMAN
<b>Immunogen</b>	The antiserum was produced against synthesized peptide derived from human Collagen alpha1 XVIII at amino acid range 1301-1350
<b>Immunogen Region</b>	1270-1350 C-Term
<b>Specificity</b>	COL18A1 polyclonal antibody (Collagen Alpha-1 (XVIII Chain Cleaved Into-Endostatin-Non-Collagenous Domain 1)) binds to endogenous Collagen Alpha-1 (XVIII Chain Cleaved Into-Endostatin-Non-Collagenous Domain 1) at the amino acid region 1270-1350 C-Term.
<b>Immunogen Sequence</b>	



Immunohistochemistry analysis of paraffin-embedded human lung carcinoma tissue, using Collagen alpha1 XVIII Antibody. The picture on the right is blocked with the synthesized peptide.