

Anti-COL12A1 antibody (1450-1530 Internal) (STJ92375)

STJ92375

GENERAL INFORMATION

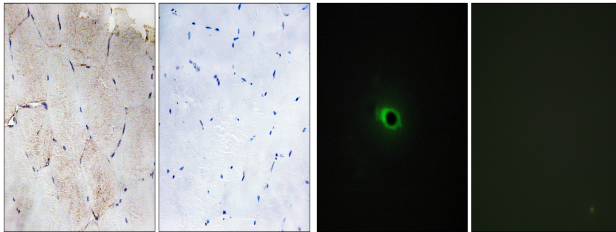
Product Type	Primary antibodies
Short Description	Rabbit polyclonal antibody anti-Collagen Alpha-1 (Xii Chain (1450-1530 Internal) is suitable for use in Immunohistochemistry, Immunofluorescence, Immunocytochemistry and ELISA research applications.
Applications	IHC-P, IF, ICC, ELISA
Host/Source	Rabbit
Reactivity	Human, Rat, Mouse

PRODUCT PROPERTIES

Clonality	Polyclonal
Clone ID	
Concentration	1 mg/mL
Conjugation	Unconjugated
Purification	The antibody was affinity-purified from rabbit anti-serum by affinity-chromatography.
Dilution Range	IHC 1:100-1:300 IF 1:200-1:1000 ELISA 1:10000
Formulation	PBS, 50% Glycerol, 0.5% BSA and 0.02% Sodium Azide.
Isotype	IgG
Storage Instruction	Store at -20°C for up to 1 year from the date of receipt, and avoid repeat freeze-thaw cycles.

TARGET INFORMATION

Gene ID	1303
Gene Symbol	COL12A1
Uniprot ID	COCA1_HUMAN
Immunogen	The antiserum was produced against synthesized peptide derived from human Collagen XII alpha1 at amino acid range 1481-1530
Immunogen Region	1450-1530 Internal
Specificity	COL12A1 polyclonal antibody (Collagen Alpha-1 (Xii Chain) binds to endogenous Collagen Alpha-1 (Xii Chain at the amino acid region 1450-1530 Internal.
Immunogen Sequence	



Immunohistochemistry analysis of paraffin-embedded human skeletal muscle tissue, using Collagen XII alpha1 Antibody. The picture on the right is blocked with the synthesized peptide.

Immunofluorescence analysis of COS7 cells, using Collagen XII alpha1 Antibody. The picture on the right is blocked with the synthesized peptide.

This product is suitable for in-vitro studies under the RESEARCH USE ONLY [RUO] licence. This product must not be used as for diagnostic or other medical purposes.
St John's Laboratory Ltd, Knowledge Dock Business Centre, University Way, London, E16 2RD | Tel: 0208 223 3081