

Anti-COL11A2 antibody (1180-1260 C-Term) (STJ92374)

STJ92374

GENERAL INFORMATION

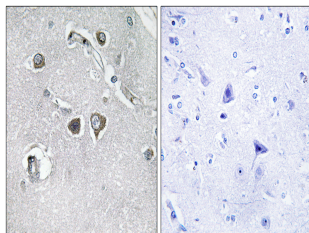
Product Type	Primary antibodies
Short Description	Rabbit polyclonal antibody anti-Collagen Alpha-2 (Xi Chain (1180-1260 C-Term) is suitable for use in Western Blot, Immunohistochemistry, Immunofluorescence and ELISA research applications.
Applications	WB, IHC-P, IF-P, ELISA
Host/Source	Rabbit
Reactivity	Human, Mouse

PRODUCT PROPERTIES

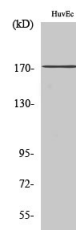
Clonality	Polyclonal
Clone ID	
Concentration	1 mg/mL
Conjugation	Unconjugated
Purification	The antibody was affinity-purified from rabbit anti-serum by affinity-chromatography.
Dilution Range	WB 1:500-1:2000 IHC 1:100-1:300 ELISA 1:20000
Formulation	PBS, 50% Glycerol, 0.5% BSA and 0.02% Sodium Azide.
Isotype	IgG
Storage Instruction	Store at -20°C for up to 1 year from the date of receipt, and avoid repeat freeze-thaw cycles.

TARGET INFORMATION

Gene ID	1302
Gene Symbol	COL11A2
Uniprot ID	COBA2_HUMAN
Immunogen	The antiserum was produced against synthesized peptide derived from human Collagen XI alpha2 at amino acid range 1211-1260
Immunogen Region	1180-1260 C-Term
Specificity	COL11A2 polyclonal antibody (Collagen Alpha-2 (Xi Chain) binds to endogenous Collagen Alpha-2 (Xi Chain at the amino acid region 1180-1260 C-Term.
Immunogen Sequence	



Immunohistochemistry analysis of paraffin-embedded human brain tissue, using Collagen XI alpha2 Antibody. The picture on the right is blocked with the synthesized peptide.



Western blot analysis of various cells using COL11A2 Polyclonal Antibody diluted at 1: 500

This product is suitable for in-vitro studies under the RESEARCH USE ONLY [RUO] licence. This product must not be used as for diagnostic or other medical purposes.
St John's Laboratory Ltd, Knowledge Dock Business Centre, University Way, London, E16 2RD | Tel: 0208 223 3081