

## Anti-COL11A1 antibody (550-630 Internal) (STJ92373)

STJ92373

### GENERAL INFORMATION

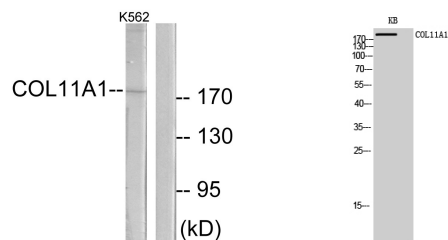
|                          |   |
|--------------------------|---|
| <b>Product Type</b>      | Primary antibodies  |
| <b>Short Description</b> | Rabbit polyclonal antibody anti-Collagen Alpha-1 (Xi Chain (550-630 Internal) is suitable for use in Western Blot, Immunohistochemistry, Immunofluorescence, Immunocytochemistry and ELISA research applications. |
| <b>Applications</b>      | WB, IHC-P, IF, ICC, ELISA   |
| <b>Host/Source</b>       | Rabbit  |
| <b>Reactivity</b>        | Human, Mouse  |

### PRODUCT PROPERTIES

|                            |  |
|----------------------------|--|
| <b>Clonality</b>           | Polyclonal   |
| <b>Clone ID</b>            |  |
| <b>Concentration</b>       | 1 mg/mL  |
| <b>Conjugation</b>         | Unconjugated   |
| <b>Purification</b>        | The antibody was affinity-purified from rabbit anti-serum by affinity-chromatography.          |
| <b>Dilution Range</b>      | WB 1:500-1:2000<br>IHC 1:100-1:300<br>IF 1:200-1:1000<br>ELISA 1:10000                         |
| <b>Formulation</b>         | PBS, 50% Glycerol, 0.5% BSA and 0.02% Sodium Azide.  |
| <b>Isotype</b>             | IgG  |
| <b>Storage Instruction</b> | Store at -20°C for up to 1 year from the date of receipt, and avoid repeat freeze-thaw cycles. |

### TARGET INFORMATION

|                           |  |
|---------------------------|--|
| <b>Gene ID</b>            | 1301   |
| <b>Gene Symbol</b>        | COL11A1  |
| <b>Uniprot ID</b>         | COBA1_HUMAN  |
| <b>Immunogen</b>          | The antiserum was produced against synthesized peptide derived from human Collagen XI alpha1 at amino acid range 581-630                           |
| <b>Immunogen Region</b>   | 550-630 Internal   |
| <b>Specificity</b>        | COL11A1 polyclonal antibody (Collagen Alpha-1 (Xi Chain) binds to endogenous Collagen Alpha-1 (Xi Chain at the amino acid region 550-630 Internal. |
| <b>Immunogen Sequence</b> |  |



Western blot analysis of lysates from K562 cells, using Collagen XI alpha1 Antibody. The lane on the right is blocked with the synthesized peptide.

Western blot analysis of KB cells using COL11A1 Polyclonal Antibody diluted at 1: 1000

This product is suitable for in-vitro studies under the RESEARCH USE ONLY [RUO] licence. This product must not be used as for diagnostic or other medical purposes.  
St John's Laboratory Ltd, Knowledge Dock Business Centre, University Way, London, E16 2RD | Tel: 0208 223 3081