

Anti-SLC28A2 antibody (340-420 Internal) (STJ92369)

STJ92369

GENERAL INFORMATION

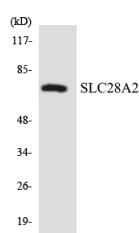
Product Type	Primary antibodies
Short Description	Rabbit polyclonal antibody anti-Sodium/Nucleoside Cotransporter 2 (340-420 Internal) is suitable for use in Western Blot, Immunohistochemistry, Immunofluorescence and ELISA research applications.
Applications	WB, IHC-P, IF-P, ELISA
Host/Source	Rabbit
Reactivity	Human, Mouse, Rat

PRODUCT PROPERTIES

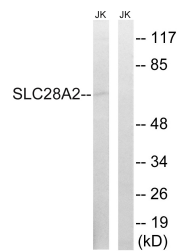
Clonality	Polyclonal
Clone ID	
Concentration	1 mg/mL
Conjugation	Unconjugated
Purification	The antibody was affinity-purified from rabbit anti-serum by affinity-chromatography.
Dilution Range	WB 1:500-1:2000 IHC 1:100-1:300 ELISA 1:10000
Formulation	PBS, 50% Glycerol, 0.5% BSA and 0.02% Sodium Azide.
Isotype	IgG
Storage Instruction	Store at -20°C for up to 1 year from the date of receipt, and avoid repeat freeze-thaw cycles.

TARGET INFORMATION

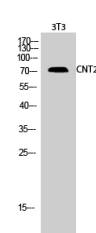
Gene ID	9153
Gene Symbol	SLC28A2
Uniprot ID	S28A2_HUMAN
Immunogen Region	The antiserum was produced against synthesized peptide derived from human SLC28A2 at amino acid range 371-420
Immunogen Region	340-420 Internal
Specificity	SLC28A2 polyclonal antibody (Sodium/Nucleoside Cotransporter 2) binds to endogenous Sodium/Nucleoside Cotransporter 2 at the amino acid region 340-420 Internal.
Immunogen Sequence	



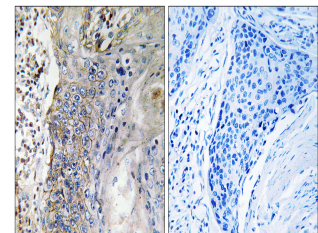
Western blot analysis of the lysates from HepG2 cells using SLC28A2 antibody.



Western blot analysis of lysates from Jurkat cells, using SLC28A2 Antibody. The lane on the right is blocked with the synthesized peptide.



Western blot analysis of 3T3 cells using CNT2 Polyclonal Antibody



Immunohistochemistry analysis of paraffin-embedded human lung carcinoma tissue, using SLC28A2 Antibody. The picture on the right is blocked with the synthesized peptide.

This product is suitable for in-vitro studies under the RESEARCH USE ONLY [RUO] licence. This product must not be used as for diagnostic or other medical purposes.
St John's Laboratory Ltd, Knowledge Dock Business Centre, University Way, London, E16 2RD | Tel: 0208 223 3081