

Anti-CNP antibody (Internal) (STJ92368)

STJ92368

GENERAL INFORMATION

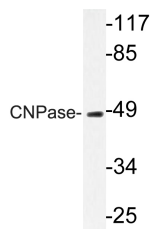
Product Type	Primary antibodies
Short Description	Rabbit polyclonal antibody anti-2 3 Cyclic-Nucleotide 3 Phosphodiesterase (Internal) is suitable for use in Western Blot, Immunohistochemistry, Immunofluorescence and ELISA research applications.
Applications	WB, IHC-P, IF-P, ELISA
Host/Source	Rabbit
Reactivity	Human, Mouse, Rat

PRODUCT PROPERTIES

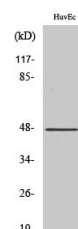
Clonality	Polyclonal
Clone ID	
Concentration	1 mg/mL
Conjugation	Unconjugated
Purification	The antibody was affinity-purified from rabbit anti-serum by affinity-chromatography.
Dilution Range	WB 1:500-1:2000 IHC 1:100-1:300 ELISA 1:40000
Formulation	PBS, 50% Glycerol, 0.5% BSA and 0.02% Sodium Azide.
Isotype	IgG
Storage Instruction	Store at 20°C for up to 1 year from the date of receipt, and avoid repeat freeze-thaw cycles.

TARGET INFORMATION

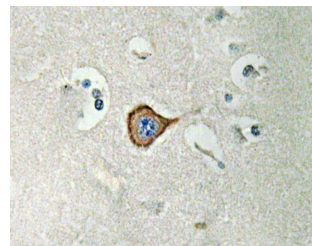
Gene ID	1267
Gene Symbol	CNP
Uniprot ID	CN37_HUMAN
Immunogen	The antiserum was produced against synthesized peptide derived from human CNPase at amino acid range 59-108
Immunogen Region	Internal
Specificity	CNP polyclonal antibody (2 NA-3 NA-Cyclic-Nucleotide 3 NA-Phosphodiesterase) binds to endogenous 2 NA-3 NA-Cyclic-Nucleotide 3 NA-Phosphodiesterase at the amino acid region Internal.
Immunogen Sequence	



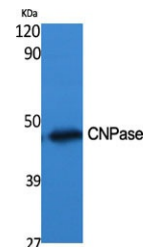
Western blot analysis of lysate from HUVEC cells, using CNPase antibody.



Western blot analysis of MCF7 cells using CNPase Polyclonal Antibody diluted at 1: 500



Immunohistochemistry analysis of CNPase antibody in paraffin-embedded human brain tissue.



Western blot analysis of various cells using CNPase Polyclonal Antibody diluted at 1: 500

This product is suitable for in-vitro studies under the RESEARCH USE ONLY [RUO] licence. This product must not be used as for diagnostic or other medical purposes.
St John's Laboratory Ltd, Knowledge Dock Business Centre, University Way, London, E16 2RD | Tel: 0208 223 3081