

Anti-CNOT4 antibody (30-110 Internal) (STJ92366)

STJ92366

GENERAL INFORMATION

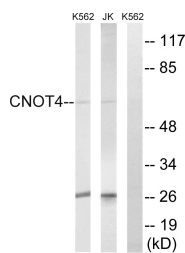
Product Type	Primary antibodies
Short Description	Rabbit polyclonal antibody anti-Ccr4-Not Transcription Complex Subunit 4 (30-110 Internal) is suitable for use in Western Blot, Immunohistochemistry, Immunofluorescence and ELISA research applications.
Applications	WB, IHC-P, IF-P, ELISA
Host/Source	Rabbit
Reactivity	Human, Mouse, Rat

PRODUCT PROPERTIES

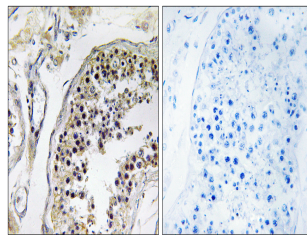
Clonality	Polyclonal
Clone ID	
Concentration	1 mg/mL
Conjugation	Unconjugated
Purification	The antibody was affinity-purified from rabbit anti-serum by affinity-chromatography.
Dilution Range	WB 1:500-1:2000 IHC 1:100-1:300 ELISA 1:20000
Formulation	PBS, 50% Glycerol, 0.5% BSA and 0.02% Sodium Azide.
Isotype	IgG
Storage Instruction	Store at -20°C for up to 1 year from the date of receipt, and avoid repeat freeze-thaw cycles.

TARGET INFORMATION

Gene ID	4850
Gene Symbol	CNOT4
Uniprot ID	CNOT4_HUMAN
Immunogen	The antiserum was produced against synthesized peptide derived from human CNOT4 at amino acid range 61-110
Immunogen Region	30-110 Internal
Specificity	CNOT4 polyclonal antibody (Ccr4-Not Transcription Complex Subunit 4) binds to endogenous Ccr4-Not Transcription Complex Subunit 4 at the amino acid region 30-110 Internal.
Immunogen Sequence	



Western blot analysis of lysates from Jurkat and K562 cells, using CNOT4 Antibody. The lane on the right is blocked with the synthesized peptide.



Immunohistochemistry analysis of paraffin-embedded human testis tissue, using CNOT4 Antibody. The picture on the right is blocked with the synthesized peptide.

This product is suitable for in-vitro studies under the RESEARCH USE ONLY [RUO] licence. This product must not be used as for diagnostic or other medical purposes.
St John's Laboratory Ltd, Knowledge Dock Business Centre, University Way, London, E16 2RD | Tel: 0208 223 3081