

Anti-CNKSR2 antibody (610-690 Internal) (STJ92364)

STJ92364

GENERAL INFORMATION

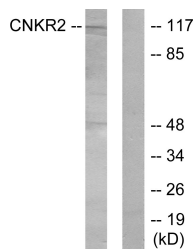
Product Type	Primary antibodies
Short Description	Rabbit polyclonal antibody anti-Connector Enhancer Of Kinase Suppressor Of Ras 2 (610-690 Internal) is suitable for use in Western Blot, Immunohistochemistry, Immunofluorescence and ELISA research applications.
Applications	WB, IHC-P, IF-P, ELISA
Host/Source	Rabbit
Reactivity	Human, Mouse, Rat

PRODUCT PROPERTIES

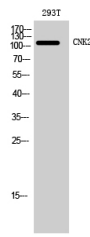
Clonality	Polyclonal
Clone ID	
Concentration	1 mg/mL
Conjugation	Unconjugated
Purification	The antibody was affinity-purified from rabbit anti-serum by affinity-chromatography.
Dilution Range	WB 1:500-1:2000 IHC 1:100-1:300 ELISA 1:20000
Formulation	PBS, 50% Glycerol, 0.5% BSA and 0.02% Sodium Azide.
Isotype	IgG
Storage Instruction	Store at 20°C for up to 1 year from the date of receipt, and avoid repeat freeze-thaw cycles.

TARGET INFORMATION

Gene ID	22866
Gene Symbol	CNKSR2
Uniprot ID	CNKR2_HUMAN
Immunogen Region	The antiserum was produced against synthesized peptide derived from human CNKR2 at amino acid range 641-690
Specificity	CNKSR2 polyclonal antibody (Connector Enhancer Of Kinase Suppressor Of Ras 2) binds to endogenous Connector Enhancer Of Kinase Suppressor Of Ras 2 at the amino acid region 610-690 Internal.
Immunogen Sequence	



Western blot analysis of lysates from Jurkat cells, using CNKR2 Antibody. The lane on the right is blocked with the synthesized peptide.



Western blot analysis of 293T cells using CNK2 Polyclonal Antibody diluted at 1: 500

This product is suitable for in-vitro studies under the RESEARCH USE ONLY [RUO] licence. This product must not be used as for diagnostic or other medical purposes.
St John's Laboratory Ltd, Knowledge Dock Business Centre, University Way, London, E16 2RD | Tel: 0208 223 3081