

## Anti-CNKSR1 antibody (460-540 Internal) (STJ92363)

STJ92363

### GENERAL INFORMATION

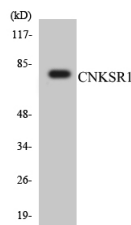
<b>Product Type</b>	Primary antibodies
<b>Short Description</b>	Rabbit polyclonal antibody anti-Connector Enhancer Of Kinase Suppressor Of Ras 1 (460-540 Internal) is suitable for use in Western Blot, Immunohistochemistry, Immunofluorescence, Immunocytochemistry and ELISA research applications.
<b>Applications</b>	WB, IHC-P, IF, ICC, ELISA
<b>Host/Source</b>	Rabbit
<b>Reactivity</b>	Human, Mouse, Rat

### PRODUCT PROPERTIES

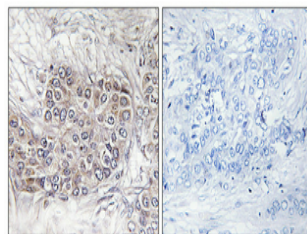
<b>Clonality</b>	Polyclonal
<b>Clone ID</b>	
<b>Concentration</b>	1 mg/mL
<b>Conjugation</b>	Unconjugated
<b>Purification</b>	The antibody was affinity-purified from rabbit anti-serum by affinity-chromatography.
<b>Dilution Range</b>	WB 1:500-1:2000 IHC 1:100-1:300 IF 1:200-1:1000 ELISA 1:10000
<b>Formulation</b>	PBS, 50% Glycerol, 0.5% BSA and 0.02% Sodium Azide.
<b>Isotype</b>	IgG
<b>Storage Instruction</b>	Store at -20°C for up to 1 year from the date of receipt, and avoid repeat freeze-thaw cycles.

### TARGET INFORMATION

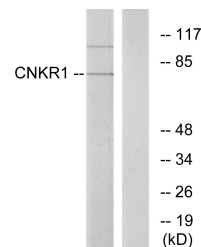
<b>Gene ID</b>	10256
<b>Gene Symbol</b>	CNKSR1
<b>Uniprot ID</b>	CNKSR1_HUMAN
<b>Immunogen</b>	The antiserum was produced against synthesized peptide derived from human CNKR1 at amino acid range 491-540
<b>Immunogen Region</b>	460-540 Internal
<b>Specificity</b>	CNKSR1 polyclonal antibody (Connector Enhancer Of Kinase Suppressor Of Ras 1) binds to endogenous Connector Enhancer Of Kinase Suppressor Of Ras 1 at the amino acid region 460-540 Internal.
<b>Immunogen Sequence</b>	



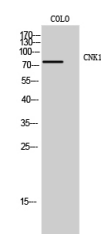
Western blot analysis of the lysates from HT-29 cells using CNKSR1 antibody.



Immunohistochemical analysis of paraffin-embedded Human breast cancer. Antibody was diluted at 1:100 (4°C overnight). High-pressure and temperature Tris-EDTA, pH8.0 was used for antigen retrieval. Negative control (right) obtained from antibody was pre-absorbed by immunogen peptide.



Western blot analysis of lysates from COLO205 cells, using CNK1 Antibody. The lane on the right is blocked with the synthesized peptide.



Western blot analysis of COLO cells using CNK1 Polyclonal Antibody