

Anti-CNGA2 antibody (360-440 Internal) (STJ92362)

STJ92362

GENERAL INFORMATION

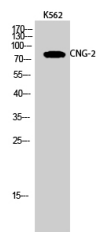
Product Type	Primary antibodies
Short Description	Rabbit polyclonal antibody anti-Cyclic Nucleotide-Gated Olfactory Channel (360-440 Internal) is suitable for use in Western Blot, Immunofluorescence, Immunocytochemistry and ELISA research applications.
Applications	WB, IF, ICC, ELISA
Host/Source	Rabbit
Reactivity	Human, Mouse, Rat

PRODUCT PROPERTIES

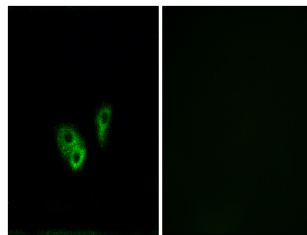
Clonality	Polyclonal
Clone ID	
Concentration	1 mg/mL
Conjugation	Unconjugated
Purification	The antibody was affinity-purified from rabbit anti-serum by affinity-chromatography.
Dilution Range	WB 1:500-1:2000 IF 1:200-1:1000 ELISA 1:40000
Formulation	PBS, 50% Glycerol, 0.5% BSA and 0.02% Sodium Azide.
Isotype	IgG
Storage Instruction	Store at 20°C for up to 1 year from the date of receipt, and avoid repeat freeze-thaw cycles.

TARGET INFORMATION

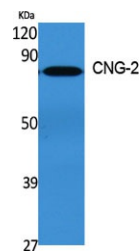
Gene ID	1260
Gene Symbol	CNGA2
Uniprot ID	CNGA2_HUMAN
Immunogen	The antiserum was produced against synthesized peptide derived from human CNGA2 at amino acid range 391-440
Immunogen Region	360-440 Internal
Specificity	CNGA2 polyclonal antibody (Cyclic Nucleotide-Gated Olfactory Channel) binds to endogenous Cyclic Nucleotide-Gated Olfactory Channel at the amino acid region 360-440 Internal.
Immunogen Sequence	



Western blot analysis of K562 cells using CNG-2 Polyclonal Antibody



Immunofluorescence analysis of A549 cells, using CNGA2 Antibody. The picture on the right is blocked with the synthesized peptide.



Western blot analysis of various cells using CNG-2 Polyclonal Antibody

This product is suitable for in-vitro studies under the RESEARCH USE ONLY [RUO] licence. This product must not be used as for diagnostic or other medical purposes.
St John's Laboratory Ltd, Knowledge Dock Business Centre, University Way, London, E16 2RD | Tel: 0208 223 3081