

Anti-CNGB1 antibody (540-620 Internal) (STJ92361)

STJ92361

GENERAL INFORMATION

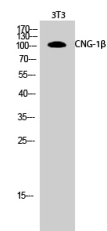
Product Type	Primary antibodies
Short Description	Rabbit polyclonal antibody anti-Cyclic Nucleotide-Gated Cation Channel Beta-1 (540-620 Internal) is suitable for use in Western Blot and ELISA research applications.
Applications	WB, ELISA
Host/Source	Rabbit
Reactivity	Human, Mouse, Rat

PRODUCT PROPERTIES

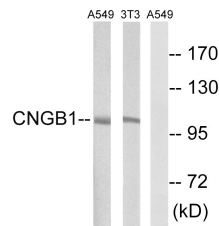
Clonality	Polyclonal
Clone ID	
Concentration	1 mg/mL
Conjugation	Unconjugated
Purification	The antibody was affinity-purified from rabbit anti-serum by affinity-chromatography.
Dilution Range	WB 1:500-1:2000 ELISA 1:10000
Formulation	PBS, 50% Glycerol, 0.5% BSA and 0.02% Sodium Azide.
Isotype	IgG
Storage Instruction	Store at -20°C for up to 1 year from the date of receipt, and avoid repeat freeze-thaw cycles.

TARGET INFORMATION

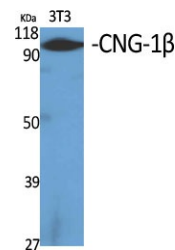
Gene ID	1258
Gene Symbol	CNGB1
Uniprot ID	CNGB1_HUMAN
Immunogen	The antiserum was produced against synthesized peptide derived from human CNGB1 at amino acid range 571-620
Immunogen Region	540-620 Internal
Specificity	CNGB1 polyclonal antibody (Cyclic Nucleotide-Gated Cation Channel Beta-1) binds to endogenous Cyclic Nucleotide-Gated Cation Channel Beta-1 at the amino acid region 540-620 Internal.
Immunogen Sequence	



Western blot analysis of 3T3 cells using CNG-1 Beta Polyclonal Antibody



Western blot analysis of lysates from NIH/3T3 and A549 cells, using CNG1 Antibody. The lane on the right is blocked with the synthesized peptide.



Western blot analysis of various cells using CNG-1 Beta Polyclonal Antibody

This product is suitable for in-vitro studies under the RESEARCH USE ONLY [RUO] licence. This product must not be used as for diagnostic or other medical purposes.
St John's Laboratory Ltd, Knowledge Dock Business Centre, University Way, London, E16 2RD | Tel: 0208 223 3081