

Anti-CNGA1 antibody (370-450 Internal) (STJ92360)

STJ92360

GENERAL INFORMATION

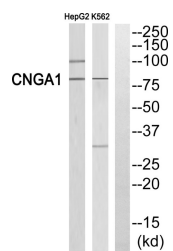
Product Type	Primary antibodies
Short Description	Rabbit polyclonal antibody anti-Cgmp-Gated Cation Channel Alpha-1 (370-450 Internal) is suitable for use in Western Blot and ELISA research applications.
Applications	WB, ELISA
Host/Source	Rabbit
Reactivity	Human, Mouse, Rat

PRODUCT PROPERTIES

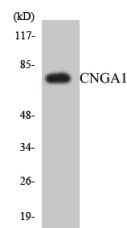
Clonality	Polyclonal
Clone ID	
Concentration	1 mg/mL
Conjugation	Unconjugated
Purification	The antibody was affinity-purified from rabbit anti-serum by affinity-chromatography.
Dilution Range	WB 1:500-1:2000 ELISA 1:40000
Formulation	PBS, 50% Glycerol, 0.5% BSA and 0.02% Sodium Azide.
Isotype	IgG
Storage Instruction	Store at -20°C for up to 1 year from the date of receipt, and avoid repeat freeze-thaw cycles.

TARGET INFORMATION

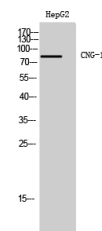
Gene ID	1259
Gene Symbol	CNGA1
Uniprot ID	CNGA1_HUMAN
Immunogen	The antiserum was produced against synthesized peptide derived from human CNGA1 at amino acid range 401-450
Immunogen Region	370-450 Internal
Specificity	CNGA1 polyclonal antibody (Cgmp-Gated Cation Channel Alpha-1) binds to endogenous Cgmp-Gated Cation Channel Alpha-1 at the amino acid region 370-450 Internal.
Immunogen Sequence	



Western blot analysis of CNGA1 Antibody. The lane on the right is blocked with the CNGA1 peptide.



Western blot analysis of the lysates from HepG2 cells using CNGA1 antibody.



Western blot analysis of HepG2 cells using CNG-1 Polyclonal Antibody

This product is suitable for in-vitro studies under the RESEARCH USE ONLY [RUO] licence. This product must not be used as for diagnostic or other medical purposes.
St John's Laboratory Ltd, Knowledge Dock Business Centre, University Way, London, E16 2RD | Tel: 0208 223 3081