

Anti-MYC antibody (300-380) (STJ92355)

STJ92355

GENERAL INFORMATION

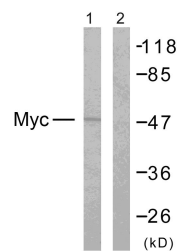
Product Type	Primary antibodies
Short Description	Rabbit polyclonal antibody anti-Myc Proto-Oncogene Protein (300-380) is suitable for use in Western Blot, Immunohistochemistry, Immunofluorescence and ELISA research applications.
Applications	WB, IHC-P, IF-P, ELISA
Host/Source	Rabbit
Reactivity	Human, Mouse, Rat

PRODUCT PROPERTIES

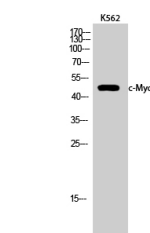
Clonality	Polyclonal
Clone ID	
Concentration	1 mg/mL
Conjugation	Unconjugated
Purification	The antibody was affinity-purified from rabbit anti-serum by affinity-chromatography.
Dilution Range	WB 1:500-1:2000 IHC 1:100-1:300 ELISA 1:20000
Formulation	PBS, 50% Glycerol, 0.5% BSA and 0.02% Sodium Azide.
Isotype	IgG
Storage Instruction	Store at -20°C for up to 1 year from the date of receipt, and avoid repeat freeze-thaw cycles.

TARGET INFORMATION

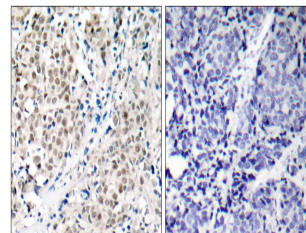
Gene ID	4609
Gene Symbol	MYC
Uniprot ID	MYC_HUMAN
Immunogen	The antiserum was produced against synthesized peptide derived from human MYC at amino acid range 325-374
Immunogen Region	300-380
Specificity	MYC polyclonal antibody (Myc Proto-Oncogene Protein) binds to endogenous Myc Proto-Oncogene Protein at the amino acid region 300-380.
Immunogen Sequence	



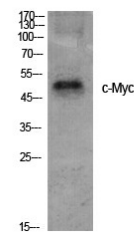
Western blot analysis of lysates from NIH/3T3 cells, treated with EGF 200ng/ml 30', using MYC Antibody. The lane on the right is blocked with the synthesized peptide.



Western blot analysis of K562 cells using c-Myc Polyclonal Antibody



Immunohistochemistry analysis of paraffin-embedded human breast carcinoma tissue, using MYC Antibody. The picture on the right is blocked with the synthesized peptide.



Western blot analysis of various cells using c-Myc Polyclonal Antibody