

Anti-CMTM4 antibody (130-210 Internal) (STJ92351)

STJ92351

GENERAL INFORMATION

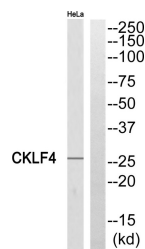
Product Type	Primary antibodies
Short Description	Rabbit polyclonal antibody anti-Cklf-Like Marvel Transmembrane Domain-Containing Protein 4 (130-210 Internal) is suitable for use in Western Blot, Immunohistochemistry, Immunofluorescence and ELISA research applications.
Applications	WB, IHC-P, IF-P, ELISA
Host/Source	Rabbit
Reactivity	Human, Mouse

PRODUCT PROPERTIES

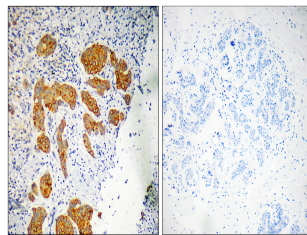
Clonality	Polyclonal
Clone ID	
Concentration	1 mg/mL
Conjugation	Unconjugated
Purification	The antibody was affinity-purified from rabbit anti-serum by affinity-chromatography.
Dilution Range	WB 1:500-1:2000 IHC 1:100-1:300 ELISA 1:40000
Formulation	PBS, 50% Glycerol, 0.5% BSA and 0.02% Sodium Azide.
Isotype	IgG
Storage Instruction	Store at 20°C for up to 1 year from the date of receipt, and avoid repeat freeze-thaw cycles.

TARGET INFORMATION

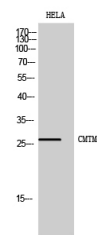
Gene ID	146223
Gene Symbol	CMTM4
Uniprot ID	CKLF4_HUMAN
Immunogen	The antiserum was produced against synthesized peptide derived from human CKLF4 at amino acid range 161-210
Immunogen Region	130-210 Internal
Specificity	CMTM4 polyclonal antibody (Cklf-Like Marvel Transmembrane Domain-Containing Protein 4) binds to endogenous Cklf-Like Marvel Transmembrane Domain-Containing Protein 4 at the amino acid region 130-210 Internal.
Immunogen Sequence	



Western blot analysis of CKLF4 Antibody. The lane on the right is blocked with the CKLF4 peptide.



Immunohistochemistry analysis of paraffin-embedded human breast carcinoma, using CKLF4 Antibody. The lane on the right is blocked with the CKLF4 peptide.



Western blot analysis of HELA cells using CMTM4 Polyclonal Antibody

This product is suitable for in-vitro studies under the RESEARCH USE ONLY [RUO] licence. This product must not be used as for diagnostic or other medical purposes.
St John's Laboratory Ltd, Knowledge Dock Business Centre, University Way, London, E16 2RD | Tel: 0208 223 3081