

Anti-CMTM3 antibody (1-80 N-Term) (STJ92350)

STJ92350

GENERAL INFORMATION

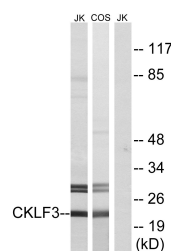
Product Type	Primary antibodies
Short Description	Rabbit polyclonal antibody anti-Ck1f-Like Marvel Transmembrane Domain-Containing Protein 3 (1-80 N-Term) is suitable for use in Western Blot and ELISA research applications.
Applications	WB, ELISA
Host/Source	Rabbit
Reactivity	Human, Monkey

PRODUCT PROPERTIES

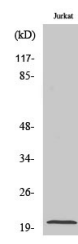
Clonality	Polyclonal
Clone ID	
Concentration	1 mg/mL
Conjugation	Unconjugated
Purification	The antibody was affinity-purified from rabbit anti-serum by affinity-chromatography.
Dilution	WB 1:500-1:2000
Range	ELISA 1:40000
Formulation	PBS, 50% Glycerol, 0.5% BSA and 0.02% Sodium Azide.
Isotype	IgG
Storage	Store at -20°C for up to 1 year from the date of receipt, and avoid repeat freeze-thaw cycles.
Instruction	

TARGET INFORMATION

Gene ID	123920
Gene Symbol	CMTM3
Uniprot ID	CKLF3_HUMAN
Immunogen	The antiserum was produced against synthesized peptide derived from human CKLF3 at amino acid range 1-50
Immunogen Region	1-80 N-Term
Specificity	CMTM3 polyclonal antibody (Ck1f-Like Marvel Transmembrane Domain-Containing Protein 3) binds to endogenous Ck1f-Like Marvel Transmembrane Domain-Containing Protein 3 at the amino acid region 1-80 N-Term.
Immunogen Sequence	



Western blot analysis of lysates from Jurkat and COS cells, using CKLF3 Antibody. The lane on the right is blocked with the synthesized peptide.



Western blot analysis of various cells using CMTM3 Polyclonal Antibody diluted at 1: 1000

This product is suitable for in-vitro studies under the RESEARCH USE ONLY [RUO] licence. This product must not be used as for diagnostic or other medical purposes.
 St John's Laboratory Ltd, Knowledge Dock Business Centre, University Way, London, E16 2RD | Tel: 0208 223 3081