

## Anti-CMTM2 antibody (140-220 C-Term) (STJ92349)

STJ92349

### GENERAL INFORMATION

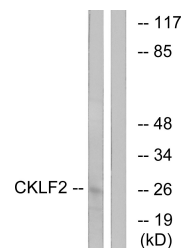
|                          |  |
|--------------------------|--|
| <b>Product Type</b>      | Primary antibodies   |
| <b>Short Description</b> | Rabbit polyclonal antibody anti-Cklf-Like Marvel Transmembrane Domain-Containing Protein 2 (140-220 C-Term) is suitable for use in Western Blot and ELISA research applications. |
| <b>Applications</b>      | WB, ELISA  |
| <b>Host/Source</b>       | Rabbit   |
| <b>Reactivity</b>        | Human, Rat, Mouse  |

### PRODUCT PROPERTIES

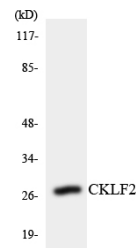
|                      |  |
|----------------------|--|
| <b>Clonality</b>     | Polyclonal   |
| <b>Clone ID</b>      |  |
| <b>Concentration</b> | 1 mg/mL  |
| <b>Conjugation</b>   | Unconjugated   |
| <b>Purification</b>  | The antibody was affinity-purified from rabbit anti-serum by affinity-chromatography.          |
| <b>Dilution</b>      | WB 1:500-1:2000  |
| <b>Range</b>         | ELISA 1:40000  |
| <b>Formulation</b>   | PBS, 50% Glycerol, 0.5% BSA and 0.02% Sodium Azide.  |
| <b>Isotype</b>       | IgG  |
| <b>Storage</b>       | Store at -20°C for up to 1 year from the date of receipt, and avoid repeat freeze-thaw cycles. |
| <b>Instruction</b>   |  |

### TARGET INFORMATION

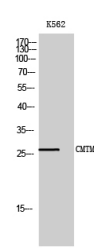
|                           |  |
|---------------------------|--|
| <b>Gene ID</b>            | 146225   |
| <b>Gene Symbol</b>        | CMTM2  |
| <b>Uniprot ID</b>         | CKLF2_HUMAN  |
| <b>Immunogen</b>          | The antiserum was produced against synthesized peptide derived from human CKLF2 at amino acid range 171-220  |
| <b>Immunogen Region</b>   | 140-220 C-Term   |
| <b>Specificity</b>        | CMTM2 polyclonal antibody (Cklf-Like Marvel Transmembrane Domain-Containing Protein 2) binds to endogenous Cklf-Like Marvel Transmembrane Domain-Containing Protein 2 at the amino acid region 140-220 C-Term. |
| <b>Immunogen Sequence</b> |  |



Western blot analysis of lysates from K562 cells, using CKLF2 Antibody. The lane on the right is blocked with the synthesized peptide.



Western blot analysis of the lysates from COLO205 cells using CKLF2 antibody.



Western blot analysis of K562 cells using CMTM2 Polyclonal Antibody

This product is suitable for in-vitro studies under the RESEARCH USE ONLY [RUO] licence. This product must not be used as for diagnostic or other medical purposes.  
 St John's Laboratory Ltd, Knowledge Dock Business Centre, University Way, London, E16 2RD | Tel: 0208 223 3081