

Anti-CMTM1 antibody (90-170 C-Term) (STJ92348)

STJ92348

GENERAL INFORMATION

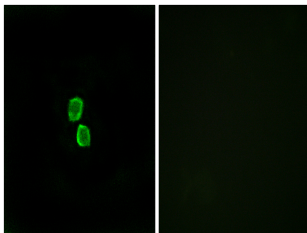
Product Type	Primary antibodies
Short Description	Rabbit polyclonal antibody anti-Cklf-Like Marvel Transmembrane Domain-Containing Protein 1 (90-170 C-Term) is suitable for use in Immunofluorescence, Immunocytochemistry and ELISA research applications.
Applications	IF, ICC, ELISA
Host/Source	Rabbit
Reactivity	Human, Rat, Mouse

PRODUCT PROPERTIES

Clonality	Polyclonal
Clone ID	
Concentration	1 mg/mL
Conjugation	Unconjugated
Purification	The antibody was affinity-purified from rabbit anti-serum by affinity-chromatography.
Dilution	IF 1:200-1:1000
Range	ELISA 1:40000
Formulation	PBS, 50% Glycerol, 0.5% BSA and 0.02% Sodium Azide.
Isotype	IgG
Storage	Store at -20°C for up to 1 year from the date of receipt, and avoid repeat freeze-thaw cycles.
Instruction	

TARGET INFORMATION

Gene ID	113540
Gene Symbol	CMTM1
Uniprot ID	CKLF1_HUMAN
Immunogen	The antiserum was produced against synthesized peptide derived from human CKLF1 at amino acid range 120-169
Immunogen Region	90-170 C-Term
Specificity	CMTM1 polyclonal antibody (Cklf-Like Marvel Transmembrane Domain-Containing Protein 1) binds to endogenous Cklf-Like Marvel Transmembrane Domain-Containing Protein 1 at the amino acid region 90-170 C-Term.
Immunogen Sequence	



Immunofluorescence analysis of MCF7 cells, using CKLF1 Antibody. The picture on the right is blocked with the synthesized peptide.

This product is suitable for in-vitro studies under the RESEARCH USE ONLY [RUO] licence. This product must not be used as for diagnostic or other medical purposes.
St John's Laboratory Ltd, Knowledge Dock Business Centre, University Way, London, E16 2RD | Tel: 0208 223 3081