

Anti-MAF antibody (270-350 C-Term) (STJ92347)

STJ92347

GENERAL INFORMATION

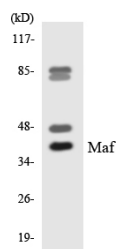
Product Type	Primary antibodies
Short Description	Rabbit polyclonal antibody anti-Transcription Factor Maf (270-350 C-Term) is suitable for use in Western Blot and ELISA research applications.
Applications	WB, ELISA
Host/Source	Rabbit
Reactivity	Human, Mouse, Rat

PRODUCT PROPERTIES

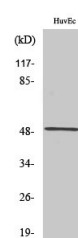
Clonality	Polyclonal
Clone ID	
Concentration	1 mg/mL
Conjugation	Unconjugated
Purification	The antibody was affinity-purified from rabbit anti-serum by affinity-chromatography.
Dilution Range	WB 1:500-1:2000 ELISA 1:10000
Formulation	PBS, 50% Glycerol, 0.5% BSA and 0.02% Sodium Azide.
Isotype	IgG
Storage Instruction	Store at -20°C for up to 1 year from the date of receipt, and avoid repeat freeze-thaw cycles.

TARGET INFORMATION

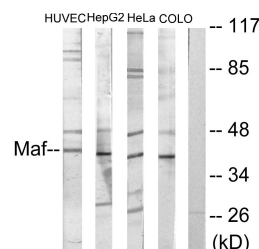
Gene ID	4094
Gene Symbol	MAF
Uniprot ID	MAF_HUMAN
Immunogen	The antiserum was produced against synthesized peptide derived from human Maf at amino acid range 301-350
Immunogen Region	270-350 C-Term
Specificity	MAF polyclonal antibody (Transcription Factor Maf) binds to endogenous Transcription Factor Maf at the amino acid region 270-350 C-Term.
Immunogen Sequence	



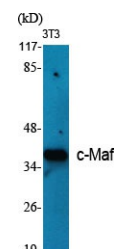
Western blot analysis of the lysates from HeLa cells using Maf antibody.



Western blot analysis of COLO205 cells using c-Maf Polyclonal Antibody diluted at 1: 500



Western blot analysis of lysates from HUVEC, HepG2, HeLa, and COLO205 cells, using Maf Antibody. The lane on the right is blocked with the synthesized peptide.



Western blot analysis of various cells using c-Maf Polyclonal Antibody diluted at 1: 500

This product is suitable for in-vitro studies under the RESEARCH USE ONLY [RUO] licence. This product must not be used as for diagnostic or other medical purposes.
St John's Laboratory Ltd, Knowledge Dock Business Centre, University Way, London, E16 2RD | Tel: 0208 223 3081