

Anti-CLN6 antibody (190-270 C-Term) (STJ92342)

STJ92342

GENERAL INFORMATION

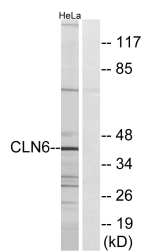
Product Type	Primary antibodies
Short Description	Rabbit polyclonal antibody anti-Ceroid-Lipofuscinosis Neuronal Protein 6 (190-270 C-Term) is suitable for use in Western Blot, Immunohistochemistry, Immunofluorescence and ELISA research applications.
Applications	WB, IHC-P, IF-P, ELISA
Host/Source	Rabbit
Reactivity	Human, Rat, Mouse

PRODUCT PROPERTIES

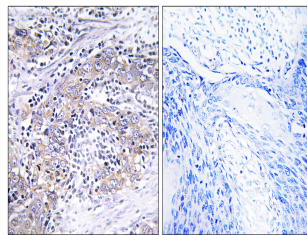
Clonality	Polyclonal
Clone ID	
Concentration	1 mg/mL
Conjugation	Unconjugated
Purification	The antibody was affinity-purified from rabbit anti-serum by affinity-chromatography.
Dilution Range	WB 1:500-1:2000 IHC 1:100-1:300 ELISA 1:40000
Formulation	PBS, 50% Glycerol, 0.5% BSA and 0.02% Sodium Azide.
Isotype	IgG
Storage Instruction	Store at 20°C for up to 1 year from the date of receipt, and avoid repeat freeze-thaw cycles.

TARGET INFORMATION

Gene ID	54982
Gene Symbol	CLN6
Uniprot ID	CLN6_HUMAN
Immunogen	The antiserum was produced against synthesized peptide derived from human CLN6 at amino acid range 221-270
Immunogen Region	190-270 C-Term
Specificity	CLN6 polyclonal antibody (Ceroid-Lipofuscinosis Neuronal Protein 6) binds to endogenous Ceroid-Lipofuscinosis Neuronal Protein 6 at the amino acid region 190-270 C-Term.
Immunogen Sequence	



Western blot analysis of lysates from HeLa cells, using CLN6 Antibody. The lane on the right is blocked with the synthesized peptide.



Immunohistochemistry analysis of paraffin-embedded human cervix carcinoma tissue, using CLN6 Antibody. The picture on the right is blocked with the synthesized peptide.