

## Anti-CLN5 antibody (140-220 Internal) (STJ92341)

STJ92341

### GENERAL INFORMATION

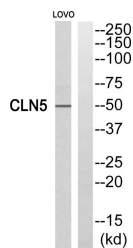
<b>Product Type</b>	Primary antibodies
<b>Short Description</b>	Rabbit polyclonal antibody anti-Ceroid-Lipofuscinosis Neuronal Protein 5 (140-220 Internal) is suitable for use in Western Blot and ELISA research applications.
<b>Applications</b>	WB, ELISA
<b>Host/Source</b>	Rabbit
<b>Reactivity</b>	Human, Mouse, Rat

### PRODUCT PROPERTIES

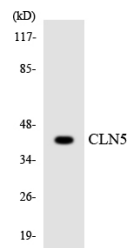
<b>Clonality</b>	Polyclonal
<b>Clone ID</b>	
<b>Concentration</b>	1 mg/mL
<b>Conjugation</b>	Unconjugated
<b>Purification</b>	The antibody was affinity-purified from rabbit anti-serum by affinity-chromatography.
<b>Dilution Range</b>	WB 1:500-1:2000 ELISA 1:10000
<b>Formulation</b>	PBS, 50% Glycerol, 0.5% BSA and 0.02% Sodium Azide.
<b>Isotype</b>	IgG
<b>Storage</b>	Store at -20°C for up to 1 year from the date of receipt, and avoid repeat freeze-thaw cycles.
<b>Instruction</b>	

### TARGET INFORMATION

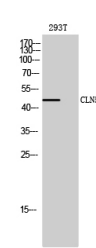
<b>Gene ID</b>	1203
<b>Gene Symbol</b>	CLN5
<b>Uniprot ID</b>	CLN5_HUMAN
<b>Immunogen</b>	The antiserum was produced against synthesized peptide derived from human CLN5 at amino acid range 171-220
<b>Immunogen Region</b>	140-220 Internal
<b>Specificity</b>	CLN5 polyclonal antibody (Ceroid-Lipofuscinosis Neuronal Protein 5) binds to endogenous Ceroid-Lipofuscinosis Neuronal Protein 5 at the amino acid region 140-220 Internal.
<b>Immunogen Sequence</b>	



Western blot analysis of CLN5 Antibody. The lane on the right is blocked with the CLN5 peptide.



Western blot analysis of the lysates from COLO205 cells using CLN5 antibody.



Western blot analysis of 293T cells using CLN5 Polyclonal Antibody diluted at 1: 1000

This product is suitable for in-vitro studies under the RESEARCH USE ONLY [RUO] licence. This product must not be used as for diagnostic or other medical purposes.  
St John's Laboratory Ltd, Knowledge Dock Business Centre, University Way, London, E16 2RD | Tel: 0208 223 3081