

Anti-PPT1 antibody (N-Term) (STJ92340)

STJ92340

GENERAL INFORMATION

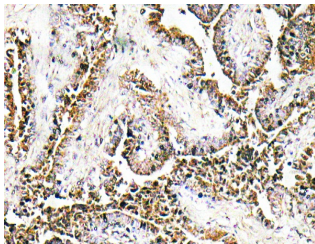
Product Type	Primary antibodies
Short Description	Rabbit polyclonal antibody anti-Palmitoyl-Protein Thioesterase 1 (N-Term) is suitable for use in Immunohistochemistry, Immunofluorescence and ELISA research applications.
Applications	IHC-P, IF-P, ELISA
Host/Source	Rabbit
Reactivity	Human, Mouse, Rat

PRODUCT PROPERTIES

Clonality	Polyclonal
Clone ID	
Concentration	1 mg/mL
Conjugation	Unconjugated
Purification	The antibody was affinity-purified from rabbit anti-serum by affinity-chromatography.
Dilution Range	IHC 1:100-1:300 ELISA 1:10000
Formulation	PBS, 50% Glycerol, 0.5% BSA and 0.02% Sodium Azide.
Isotype	IgG
Storage	Store at -20°C for up to 1 year from the date of receipt, and avoid repeat freeze-thaw cycles.
Instruction	

TARGET INFORMATION

Gene ID	5538
Gene Symbol	PPT1
Uniprot ID	PPT1_HUMAN
Immunogen	The antiserum was produced against synthesized peptide derived from human CLN1 at amino acid range 16-65
Immunogen Region	N-Term
Specificity	PPT1 polyclonal antibody (Palmitoyl-Protein Thioesterase 1) binds to endogenous Palmitoyl-Protein Thioesterase 1 at the amino acid region N-Term.
Immunogen Sequence	



Immunohistochemistry analysis of CLN1 antibody in paraffin-embedded human prostate carcinoma tissue.