

Anti-CLK4 antibody (70-150 Internal) (STJ92338)

STJ92338

GENERAL INFORMATION

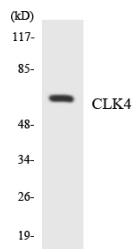
Product Type	Primary antibodies
Short Description	Rabbit polyclonal antibody anti-Dual Specificity Protein Kinase Clk4 (70-150 Internal) is suitable for use in Western Blot, Immunohistochemistry, Immunofluorescence and ELISA research applications.
Applications	WB, IHC-P, IF-P, ELISA
Host/Source	Rabbit
Reactivity	Human, Mouse

PRODUCT PROPERTIES

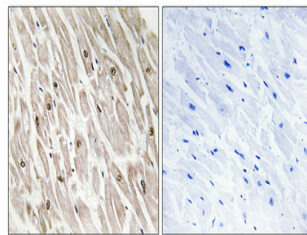
Clonality	Polyclonal
Clone ID	
Concentration	1 mg/mL
Conjugation	Unconjugated
Purification	The antibody was affinity-purified from rabbit anti-serum by affinity-chromatography.
Dilution Range	WB 1:500-1:2000 IHC 1:100-1:300 ELISA 1:10000
Formulation	PBS, 50% Glycerol, 0.5% BSA and 0.02% Sodium Azide.
Isotype	IgG
Storage Instruction	Store at -20°C for up to 1 year from the date of receipt, and avoid repeat freeze-thaw cycles.

TARGET INFORMATION

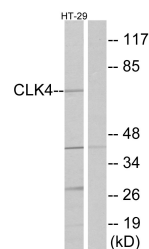
Gene ID	57396
Gene Symbol	CLK4
Uniprot ID	CLK4_HUMAN
Immunogen	The antiserum was produced against synthesized peptide derived from human CLK4 at amino acid range 101-150
Immunogen Region	70-150 Internal
Specificity	CLK4 polyclonal antibody (Dual Specificity Protein Kinase Clk4) binds to endogenous Dual Specificity Protein Kinase Clk4 at the amino acid region 70-150 Internal.
Immunogen Sequence	



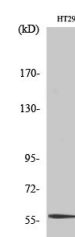
Western blot analysis of the lysates from HeLa cells using CLK4 antibody.



Immunohistochemical analysis of paraffin-embedded Human heart. Antibody was diluted at 1:100 (4°C overnight). High-pressure and temperature Tris-EDTA, pH8.0 was used for antigen retrieval. Negative control (right) obtained from antibody was pre-absorbed by immunogen peptide.



Western blot analysis of lysates from HT-29 cells, using CLK4 Antibody. The lane on the right is blocked with the synthesized peptide.



Western blot analysis of various cells using CLK4 Polyclonal Antibody cells nucleus extracted by Minute TM Cytosolic and Nuclear Fractionation kit (SC-003, Inventiotech, MN, USA).

This product is suitable for in-vitro studies under the RESEARCH USE ONLY [RUO] licence. This product must not be used as for diagnostic or other medical purposes.
St John's Laboratory Ltd, Knowledge Dock Business Centre, University Way, London, E16 2RD | Tel: 0208 223 3081