

Anti-CLIP4 antibody (290-370 Internal) (STJ92335)

STJ92335

GENERAL INFORMATION

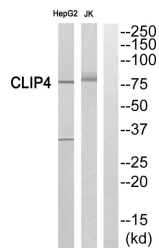
Product Type	Primary antibodies
Short Description	Rabbit polyclonal antibody anti-Cap-Gly Domain-Containing Linker Protein 4 (290-370 Internal) is suitable for use in Western Blot and ELISA research applications.
Applications	WB, ELISA
Host/Source	Rabbit
Reactivity	Human, Rat, Mouse

PRODUCT PROPERTIES

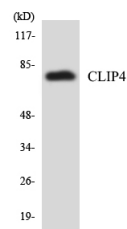
Clonality	Polyclonal
Clone ID	
Concentration	1 mg/mL
Conjugation	Unconjugated
Purification	The antibody was affinity-purified from rabbit anti-serum by affinity-chromatography.
Dilution Range	WB 1:500-1:2000 ELISA 1:40000
Formulation	PBS, 50% Glycerol, 0.5% BSA and 0.02% Sodium Azide.
Isotype	IgG
Storage Instruction	Store at -20°C for up to 1 year from the date of receipt, and avoid repeat freeze-thaw cycles.

TARGET INFORMATION

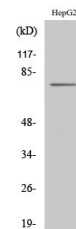
Gene ID	79745
Gene Symbol	CLIP4
Uniprot ID	CLIP4_HUMAN
Immunogen	The antiserum was produced against synthesized peptide derived from human CLIP4 at amino acid range 321-370
Immunogen Region	290-370 Internal
Specificity	CLIP4 polyclonal antibody (Cap-Gly Domain-Containing Linker Protein 4) binds to endogenous Cap-Gly Domain-Containing Linker Protein 4 at the amino acid region 290-370 Internal.
Immunogen Sequence	



Western blot analysis of CLIP4 Antibody. The lane on the right is blocked with the CLIP4 peptide.



Western blot analysis of the lysates from HUVEC cells using CLIP4 antibody.



Western blot analysis of various cells using CLIP4 Polyclonal Antibody

This product is suitable for in-vitro studies under the RESEARCH USE ONLY [RUO] licence. This product must not be used as for diagnostic or other medical purposes.
St John's Laboratory Ltd, Knowledge Dock Business Centre, University Way, London, E16 2RD | Tel: 0208 223 3081