

Anti-CLIP3 antibody (330-410 Internal) (STJ92334)

STJ92334

GENERAL INFORMATION

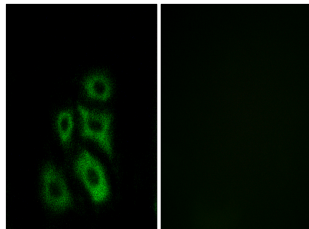
Product Type	Primary antibodies
Short Description	Rabbit polyclonal antibody anti-Cap-Gly Domain-Containing Linker Protein 3 (330-410 Internal) is suitable for use in Western Blot, Immunohistochemistry, Immunofluorescence, Immunocytochemistry and ELISA research applications.
Applications	WB, IHC-P, IF, ICC, ELISA
Host/Source	Rabbit
Reactivity	Human, Mouse, Rat

PRODUCT PROPERTIES

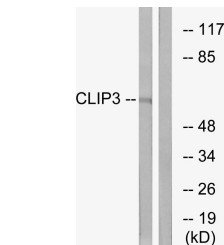
Clonality	Polyclonal
Clone ID	
Concentration	1 mg/mL
Conjugation	Unconjugated
Purification	The antibody was affinity-purified from rabbit anti-serum by affinity-chromatography.
Dilution Range	WB 1:500-1:2000 IHC 1:100-1:300 IF 1:200-1:1000 ELISA 1:40000
Formulation	PBS, 50% Glycerol, 0.5% BSA and 0.02% Sodium Azide.
Isotype	IgG
Storage Instruction	Store at -20°C for up to 1 year from the date of receipt, and avoid repeat freeze-thaw cycles.

TARGET INFORMATION

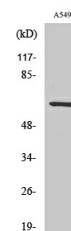
Gene ID	25999
Gene Symbol	CLIP3
Uniprot ID	CLIP3_HUMAN
Immunogen	The antiserum was produced against synthesized peptide derived from human CLIP3 at amino acid range 361-410
Immunogen Region	330-410 Internal
Specificity	CLIP3 polyclonal antibody (Cap-Gly Domain-Containing Linker Protein 3) binds to endogenous Cap-Gly Domain-Containing Linker Protein 3 at the amino acid region 330-410 Internal.
Immunogen Sequence	



Immunofluorescence analysis of A549 cells, using CLIP3 Antibody. The picture on the right is blocked with the synthesized peptide.



Western blot analysis of lysates from A549 cells, using CLIP3 Antibody. The lane on the right is blocked with the synthesized peptide.



Western blot analysis of various cells using CLIP3 Polyclonal Antibody

This product is suitable for in-vitro studies under the RESEARCH USE ONLY [RUO] licence. This product must not be used as for diagnostic or other medical purposes.
St John's Laboratory Ltd, Knowledge Dock Business Centre, University Way, London, E16 2RD | Tel: 0208 223 3081