

Anti-CLIC6 antibody (380-460 Internal) (STJ92331)

STJ92331

GENERAL INFORMATION

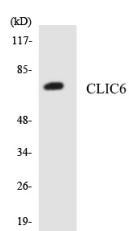
| | |
|--------------------------|--|
| Product Type | Primary antibodies |
| Short Description | Rabbit polyclonal antibody anti-Chloride Intracellular Channel Protein 6 (380-460 Internal) is suitable for use in Western Blot and ELISA research applications. |
| Applications | WB, ELISA |
| Host/Source | Rabbit |
| Reactivity | Human, Rat, Mouse |

PRODUCT PROPERTIES

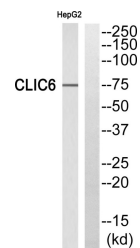
| | |
|----------------------------|--|
| Clonality | Polyclonal |
| Clone ID | |
| Concentration | 1 mg/mL |
| Conjugation | Unconjugated |
| Purification | The antibody was affinity-purified from rabbit anti-serum by affinity-chromatography. |
| Dilution Range | WB 1:500-1:2000 ELISA 1:40000 |
| Formulation | PBS, 50% Glycerol, 0.5% BSA and 0.02% Sodium Azide. |
| Isotype | IgG |
| Storage Instruction | Store at -20°C for up to 1 year from the date of receipt, and avoid repeat freeze-thaw cycles. |

TARGET INFORMATION

| | |
|---------------------------|--|
| Gene ID | 54102 |
| Gene Symbol | CLIC6 |
| Uniprot ID | CLIC6_HUMAN |
| Immunogen | The antiserum was produced against synthesized peptide derived from human CLIC6 at amino acid range 411-460 |
| Immunogen Region | 380-460 Internal |
| Specificity | CLIC6 polyclonal antibody (Chloride Intracellular Channel Protein 6) binds to endogenous Chloride Intracellular Channel Protein 6 at the amino acid region 380-460 Internal. |
| Immunogen Sequence | |



Western blot analysis of the lysates from HepG2 cells using CLIC6 antibody.



Western blot analysis of CLIC6 Antibody. The lane on the right is blocked with the CLIC6 peptide.

This product is suitable for in-vitro studies under the RESEARCH USE ONLY [RUO] licence. This product must not be used as for diagnostic or other medical purposes.
St John's Laboratory Ltd, Knowledge Dock Business Centre, University Way, London, E16 2RD | Tel: 0208 223 3081