

Anti-CLCNKA antibody (550-630 C-Term) (STJ92328)

STJ92328

GENERAL INFORMATION

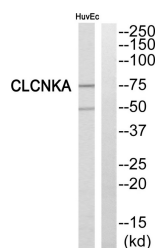
Product Type	Primary antibodies
Short Description	Rabbit polyclonal antibody anti-Chloride Channel Protein Clc-Ka (550-630 C-Term) is suitable for use in Western Blot and ELISA research applications.
Applications	WB, ELISA
Host/Source	Rabbit
Reactivity	Human, Rat, Mouse

PRODUCT PROPERTIES

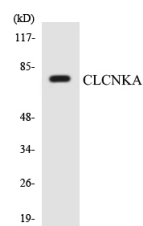
Clonality	Polyclonal
Clone ID	
Concentration	1 mg/mL
Conjugation	Unconjugated
Purification	The antibody was affinity-purified from rabbit anti-serum by affinity-chromatography.
Dilution Range	WB 1:500-1:2000 ELISA 1:40000
Formulation	PBS, 50% Glycerol, 0.5% BSA and 0.02% Sodium Azide.
Isotype	IgG
Storage	Store at -20°C for up to 1 year from the date of receipt, and avoid repeat freeze-thaw cycles.
Instruction	

TARGET INFORMATION

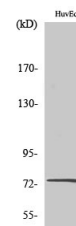
Gene ID	1187
Gene Symbol	CLCNKA
Uniprot ID	CLCKA_HUMAN
Immunogen	The antiserum was produced against synthesized peptide derived from human CLCNKA at amino acid range 581-630
Immunogen Region	550-630 C-Term
Specificity	CLCNKA polyclonal antibody (Chloride Channel Protein Clc-Ka) binds to endogenous Chloride Channel Protein Clc-Ka at the amino acid region 550-630 C-Term.
Immunogen Sequence	



Western blot analysis of CLCNKA Antibody. The lane on the right is blocked with the CLCNKA peptide.



Western blot analysis of the lysates from HepG2 cells using CLCNKA antibody.



Western blot analysis of various cells using CLC-KA Polyclonal Antibody.

This product is suitable for in-vitro studies under the RESEARCH USE ONLY [RUO] licence. This product must not be used as for diagnostic or other medical purposes.
St John's Laboratory Ltd, Knowledge Dock Business Centre, University Way, London, E16 2RD | Tel: 0208 223 3081