

Anti-CLCC1 antibody (360-440 Internal) (STJ92327)

STJ92327

GENERAL INFORMATION

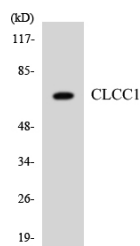
Product Type	Primary antibodies
Short Description	Rabbit polyclonal antibody anti-Chloride Channel Clic-Like Protein 1 (360-440 Internal) is suitable for use in Western Blot, Immunofluorescence, Immunocytochemistry and ELISA research applications.
Applications	WB, IF, ICC, ELISA
Host/Source	Rabbit
Reactivity	Human, Rat, Mouse

PRODUCT PROPERTIES

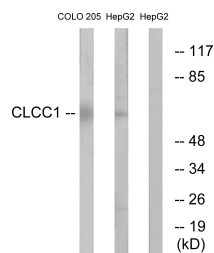
Clonality	Polyclonal
Clone ID	
Concentration	1 mg/mL
Conjugation	Unconjugated
Purification	The antibody was affinity-purified from rabbit anti-serum by affinity-chromatography.
Dilution Range	WB 1:500-1:2000 IF 1:200-1:1000 ELISA 1:40000
Formulation	PBS, 50% Glycerol, 0.5% BSA and 0.02% Sodium Azide.
Isotype	IgG
Storage Instruction	Store at 20°C for up to 1 year from the date of receipt, and avoid repeat freeze-thaw cycles.

TARGET INFORMATION

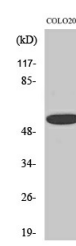
Gene ID	23155
Gene Symbol	CLCC1
Uniprot ID	CLCC1_HUMAN
Immunogen	The antiserum was produced against synthesized peptide derived from human CLCC1 at amino acid range 391-440
Immunogen Region	360-440 Internal
Specificity	CLCC1 polyclonal antibody (Chloride Channel Clic-Like Protein 1) binds to endogenous Chloride Channel Clic-Like Protein 1 at the amino acid region 360-440 Internal.
Immunogen Sequence	



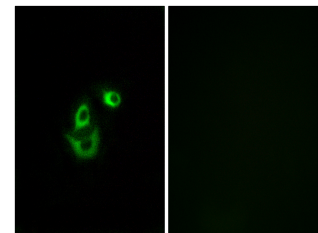
Western blot analysis of the lysates from HT-29 cells using CLCC1 antibody.



Western blot analysis of lysates from COLO and HepG2 cells, using CLCC1 Antibody. The lane on the right is blocked with the synthesized peptide.



Western blot analysis of HepG2 cells using CLCC1 Polyclonal Antibody diluted at 1: 1000



Immunofluorescence analysis of A549 cells, using CLCC1 Antibody. The picture on the right is blocked with the synthesized peptide.

This product is suitable for in-vitro studies under the RESEARCH USE ONLY [RUO] licence. This product must not be used as for diagnostic or other medical purposes.
St John's Laboratory Ltd, Knowledge Dock Business Centre, University Way, London, E16 2RD | Tel: 0208 223 3081