

Anti-CLCN7 antibody (10-90 N-Term) (STJ92326)

STJ92326

GENERAL INFORMATION

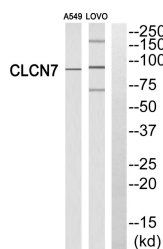
Product Type	Primary antibodies
Short Description	Rabbit polyclonal antibody anti-H (+/Cl (-Exchange Transporter 7 (10-90 N-Term) is suitable for use in Western Blot and ELISA research applications.
Applications	WB, ELISA
Host/Source	Rabbit
Reactivity	Human, Mouse, Rat

PRODUCT PROPERTIES

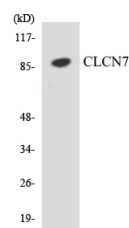
Clonality	Polyclonal
Clone ID	
Concentration	1 mg/mL
Conjugation	Unconjugated
Purification	The antibody was affinity-purified from rabbit anti-serum by affinity-chromatography.
Dilution Range	WB 1:500-1:2000 ELISA 1:40000
Formulation	PBS, 50% Glycerol, 0.5% BSA and 0.02% Sodium Azide.
Isotype	IgG
Storage	Store at -20°C for up to 1 year from the date of receipt, and avoid repeat freeze-thaw cycles.
Instruction	

TARGET INFORMATION

Gene ID	1186
Gene Symbol	CLCN7
Uniprot ID	CLCN7_HUMAN
Immunogen	The antiserum was produced against synthesized peptide derived from human CLCN7 at amino acid range 10-59
Immunogen Region	10-90 N-Term
Specificity	CLCN7 polyclonal antibody (H (+/Cl (-Exchange Transporter 7) binds to endogenous H (+/Cl (-Exchange Transporter 7 at the amino acid region 10-90 N-Term.
Immunogen Sequence	



Western blot analysis of CLCN7 Antibody. The lane on the right is blocked with the CLCN7 peptide.



Western blot analysis of the lysates from COLO205 cells using CLCN7 antibody.



Western blot analysis of A549 cells using CLCN7 Polyclonal Antibody diluted at 1:500.

This product is suitable for in-vitro studies under the RESEARCH USE ONLY [RUO] licence. This product must not be used as for diagnostic or other medical purposes.
St John's Laboratory Ltd, Knowledge Dock Business Centre, University Way, London, E16 2RD | Tel: 0208 223 3081