

Anti-CLCN6 antibody (580-660 Internal) (STJ92325)

STJ92325

GENERAL INFORMATION

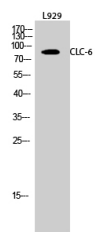
Product Type	Primary antibodies
Short Description	Rabbit polyclonal antibody anti-Chloride Transport Protein 6 (580-660 Internal) is suitable for use in Western Blot and ELISA research applications.
Applications	WB, ELISA
Host/Source	Rabbit
Reactivity	Human, Mouse, Rat, Monkey

PRODUCT PROPERTIES

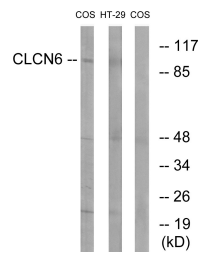
Clonality	Polyclonal
Clone ID	
Concentration	1 mg/mL
Conjugation	Unconjugated
Purification	The antibody was affinity-purified from rabbit anti-serum by affinity-chromatography.
Dilution Range	WB 1:500-1:2000 ELISA 1:40000
Formulation	PBS, 50% Glycerol, 0.5% BSA and 0.02% Sodium Azide.
Isotype	IgG
Storage Instruction	Store at -20°C for up to 1 year from the date of receipt, and avoid repeat freeze-thaw cycles.

TARGET INFORMATION

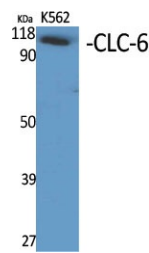
Gene ID	1185
Gene Symbol	CLCN6
Uniprot ID	CLCN6_HUMAN
Immunogen	The antiserum was produced against synthesized peptide derived from human CLCN6 at amino acid range 611-660
Immunogen Region	580-660 Internal
Specificity	CLCN6 polyclonal antibody (Chloride Transport Protein 6) binds to endogenous Chloride Transport Protein 6 at the amino acid region 580-660 Internal.
Immunogen Sequence	



Western blot analysis of L929 cells using CLC-6 Polyclonal Antibody diluted at 1: 500



Western blot analysis of lysates from COS7 and HT-29 cells, using CLCN6 Antibody. The lane on the right is blocked with the synthesized peptide.



Western blot analysis of various cells using CLC-6 Polyclonal Antibody diluted at 1: 500

This product is suitable for in-vitro studies under the RESEARCH USE ONLY [RUO] licence. This product must not be used as for diagnostic or other medical purposes.
St John's Laboratory Ltd, Knowledge Dock Business Centre, University Way, London, E16 2RD | Tel: 0208 223 3081