

Anti-CLDN8 antibody (50-130 Internal) (STJ92323)

STJ92323

GENERAL INFORMATION

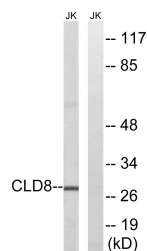
Product Type	Primary antibodies
Short Description	Rabbit polyclonal antibody anti-Claudin-8 (50-130 Internal) is suitable for use in Western Blot and ELISA research applications.
Applications	WB, ELISA
Host/Source	Rabbit
Reactivity	Human, Rat, Mouse

PRODUCT PROPERTIES

Clonality	Polyclonal
Clone ID	
Concentration	1 mg/mL
Conjugation	Unconjugated
Purification	The antibody was affinity-purified from rabbit anti-serum by affinity-chromatography.
Dilution Range	WB 1:500-1:2000 ELISA 1:5000
Formulation	PBS, 50% Glycerol, 0.5% BSA and 0.02% Sodium Azide.
Isotype	IgG
Storage Instruction	Store at -20°C for up to 1 year from the date of receipt, and avoid repeat freeze-thaw cycles.

TARGET INFORMATION

Gene ID	9073
Gene Symbol	CLDN8
Uniprot ID	CLD8_HUMAN
Immunogen	The antiserum was produced against synthesized peptide derived from human CLDN8 at amino acid range 81-130
Immunogen Region	50-130 Internal
Specificity	CLDN8 polyclonal antibody (Claudin-8) binds to endogenous Claudin-8 at the amino acid region 50-130 Internal.
Immunogen Sequence	



Western blot analysis of lysates from Jurkat cells, using CLDN8 Antibody. The lane on the right is blocked with the synthesized peptide.

This product is suitable for in-vitro studies under the RESEARCH USE ONLY [RUO] licence. This product must not be used as for diagnostic or other medical purposes.
St John's Laboratory Ltd, Knowledge Dock Business Centre, University Way, London, E16 2RD | Tel: 0208 223 3081