

Anti-CLDN4 antibody (130-210 C-Term) (STJ92316)

STJ92316

GENERAL INFORMATION

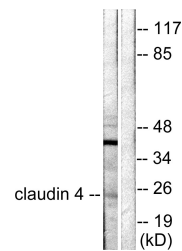
Product Type	Primary antibodies
Short Description	Rabbit polyclonal antibody anti-Claudin-4 (130-210 C-Term) is suitable for use in Western Blot, Immunohistochemistry, Immunofluorescence, Immunocytochemistry and ELISA research applications.
Applications	WB, IHC-P, IF, ICC, ELISA
Host/Source	Rabbit
Reactivity	Human, Mouse, Rat

PRODUCT PROPERTIES

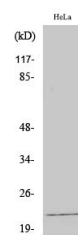
Clonality	Polyclonal
Clone ID	
Concentration	1 mg/mL
Conjugation	Unconjugated
Purification	The antibody was affinity-purified from rabbit anti-serum by affinity-chromatography.
Dilution Range	WB 1:500-1:2000 IHC 1:100-1:300 IF 1:200-1:1000 ELISA 1:5000
Formulation	PBS, 50% Glycerol, 0.5% BSA and 0.02% Sodium Azide.
Isotype	IgG
Storage Instruction	Store at -20°C for up to 1 year from the date of receipt, and avoid repeat freeze-thaw cycles.

TARGET INFORMATION

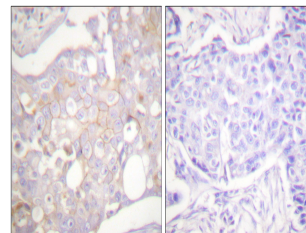
Gene ID	1364
Gene Symbol	CLDN4
Uniprot ID	CLD4_HUMAN
Immunogen	The antiserum was produced against synthesized peptide derived from human Claudin 4 at amino acid range 160-209
Immunogen Region	130-210 C-Term
Specificity	CLDN4 polyclonal antibody (Claudin-4) binds to endogenous Claudin-4 at the amino acid region 130-210 C-Term.
Immunogen Sequence	



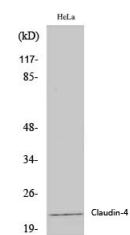
Western blot analysis of lysates from HeLa cells, using Claudin 4 Antibody. The lane on the right is blocked with the synthesized peptide.



Western blot analysis of HeLa cells using Claudin-4 Polyclonal Antibody diluted at 1: 2000



Immunohistochemistry analysis of paraffin-embedded human breast carcinoma tissue, using Claudin 4 Antibody. The picture on the right is blocked with the synthesized peptide.



Western blot analysis of various cells using Claudin-4 Polyclonal Antibody diluted at 1: 2000