

Anti-CLDN2 antibody (150-230 C-Term) (STJ92312)

STJ92312

GENERAL INFORMATION

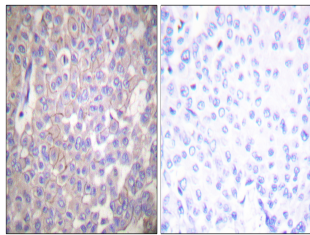
Product Type	Primary antibodies
Short Description	Rabbit polyclonal antibody anti-Claudin-2 (150-230 C-Term) is suitable for use in Western Blot, Immunohistochemistry, Immunofluorescence and ELISA research applications.
Applications	WB, IHC-P, IF-P, ELISA
Host/Source	Rabbit
Reactivity	Human, Mouse

PRODUCT PROPERTIES

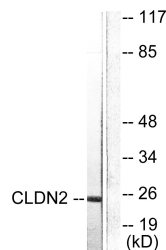
Clonality	Polyclonal
Clone ID	
Concentration	1 mg/mL
Conjugation	Unconjugated
Purification	The antibody was affinity-purified from rabbit anti-serum by affinity-chromatography.
Dilution Range	WB 1:500-1:2000 IHC 1:100-1:300 ELISA 1:5000
Formulation	PBS, 50% Glycerol, 0.5% BSA and 0.02% Sodium Azide.
Isotype	IgG
Storage Instruction	Store at -20°C for up to 1 year from the date of receipt, and avoid repeat freeze-thaw cycles.

TARGET INFORMATION

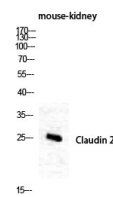
Gene ID	9075
Gene Symbol	CLDN2
Uniprot ID	CLD2_HUMAN
Immunogen	The antiserum was produced against synthesized peptide derived from human Claudin 2 at amino acid range 181-230
Immunogen Region	150-230 C-Term
Specificity	CLDN2 polyclonal antibody (Claudin-2) binds to endogenous Claudin-2 at the amino acid region 150-230 C-Term.
Immunogen Sequence	



Immunohistochemistry analysis of paraffin-embedded human breast carcinoma tissue, using Claudin 2 Antibody. The picture on the right is blocked with the synthesized peptide.



Western blot analysis of lysates from NIH/3T3 cells, using Claudin 2 Antibody. The lane on the right is blocked with the synthesized peptide.



Western blot analysis of mouse-kidney cells using Claudin-2 Polyclonal Antibody diluted at 1: 1000