

Anti-CLDN10 antibody (150-230 C-Term) (STJ92309)

STJ92309

GENERAL INFORMATION

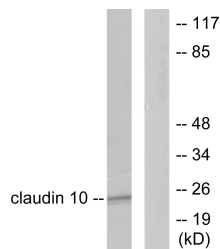
Product Type	Primary antibodies
Short Description	Rabbit polyclonal antibody anti-Claudin-10 (150-230 C-Term) is suitable for use in Western Blot, Immunohistochemistry, Immunofluorescence, Immunocytochemistry and ELISA research applications.
Applications	WB, IHC-P, IF, ICC, ELISA
Host/Source	Rabbit
Reactivity	Human, Mouse

PRODUCT PROPERTIES

Clonality	Polyclonal
Clone ID	
Concentration	1 mg/mL
Conjugation	Unconjugated
Purification	The antibody was affinity-purified from rabbit anti-serum by affinity-chromatography.
Dilution Range	WB 1:500-1:2000 IHC 1:100-1:300 IF 1:200-1:1000 ELISA 1:10000
Formulation	PBS, 50% Glycerol, 0.5% BSA and 0.02% Sodium Azide.
Isotype	IgG
Storage Instruction	Store at -20°C for up to 1 year from the date of receipt, and avoid repeat freeze-thaw cycles.

TARGET INFORMATION

Gene ID	9071
Gene Symbol	CLDN10
Uniprot ID	CLD10_HUMAN
Immunogen	The antiserum was produced against synthesized peptide derived from human Claudin 10 at amino acid range 179-228
Immunogen Region	150-230 C-Term
Specificity	CLDN10 polyclonal antibody (Claudin-10) binds to endogenous Claudin-10 at the amino acid region 150-230 C-Term.
Immunogen Sequence	



Western blot analysis of lysates from LOVO cells, using Claudin 10 Antibody. The lane on the right is blocked with the synthesized peptide.