

## Anti-CLDN1 antibody (140-220) (STJ92308)

STJ92308

### GENERAL INFORMATION

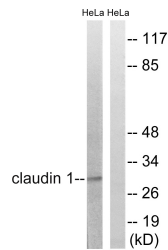
|                          |  |
|--------------------------|--|
| <b>Product Type</b>      | Primary antibodies   |
| <b>Short Description</b> | Rabbit polyclonal antibody anti-Claudin-1 (140-220) is suitable for use in Western Blot and ELISA research applications. |
| <b>Applications</b>      | WB, ELISA  |
| <b>Host/Source</b>       | Rabbit   |
| <b>Reactivity</b>        | Human, Mouse, Rat  |

### PRODUCT PROPERTIES

|                            |  |
|----------------------------|--|
| <b>Clonality</b>           | Polyclonal   |
| <b>Clone ID</b>            |  |
| <b>Concentration</b>       | 1 mg/mL  |
| <b>Conjugation</b>         | Unconjugated   |
| <b>Purification</b>        | The antibody was affinity-purified from rabbit anti-serum by affinity-chromatography.          |
| <b>Dilution Range</b>      | WB 1:500-1:2000<br>ELISA 1:20000   |
| <b>Formulation</b>         | PBS, 50% Glycerol, 0.5% BSA and 0.02% Sodium Azide.  |
| <b>Isotype</b>             | IgG  |
| <b>Storage Instruction</b> | Store at -20°C for up to 1 year from the date of receipt, and avoid repeat freeze-thaw cycles. |

### TARGET INFORMATION

|                           |   |
|---------------------------|---|
| <b>Gene ID</b>            | 9076  |
| <b>Gene Symbol</b>        | CLDN1   |
| <b>Uniprot ID</b>         | CLD1_HUMAN  |
| <b>Immunogen</b>          | The antiserum was produced against synthesized peptide derived from human Claudin 1 at amino acid range 162-211 |
| <b>Immunogen Region</b>   | 140-220   |
| <b>Specificity</b>        | CLDN1 polyclonal antibody (Claudin-1) binds to endogenous Claudin-1 at the amino acid region 140-220.           |
| <b>Immunogen Sequence</b> |   |



Western blot analysis of lysates from HeLa cells, treated with Hu 2nM 24h, using Claudin 1 Antibody. The lane on the right is blocked with the synthesized peptide.

This product is suitable for in-vitro studies under the RESEARCH USE ONLY [RUO] licence. This product must not be used as for diagnostic or other medical purposes.  
 St John's Laboratory Ltd, Knowledge Dock Business Centre, University Way, London, E16 2RD | Tel: 0208 223 3081