

## Anti-CLASP1 antibody (1140-1220 C-Term) (STJ92306)

STJ92306

### GENERAL INFORMATION

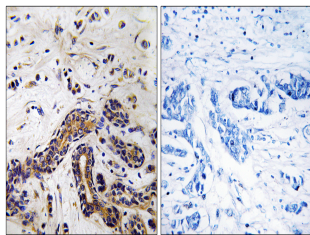
<b>Product Type</b>	Primary antibodies
<b>Short Description</b>	Rabbit polyclonal antibody anti-Clip-Associating Protein 1 (1140-1220 C-Term) is suitable for use in Western Blot, Immunohistochemistry, Immunofluorescence and ELISA research applications.
<b>Applications</b>	WB, IHC-P, IF-P, ELISA
<b>Host/Source</b>	Rabbit
<b>Reactivity</b>	Human, Mouse

### PRODUCT PROPERTIES

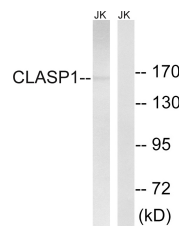
<b>Clonality</b>	Polyclonal
<b>Clone ID</b>	
<b>Concentration</b>	1 mg/mL
<b>Conjugation</b>	Unconjugated
<b>Purification</b>	The antibody was affinity-purified from rabbit anti-serum by affinity-chromatography.
<b>Dilution Range</b>	WB 1:500-1:2000 IHC 1:100-1:300 ELISA 1:40000
<b>Formulation</b>	PBS, 50% Glycerol, 0.5% BSA and 0.02% Sodium Azide.
<b>Isotype</b>	IgG
<b>Storage Instruction</b>	Store at -20°C for up to 1 year from the date of receipt, and avoid repeat freeze-thaw cycles.

### TARGET INFORMATION

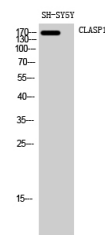
<b>Gene ID</b>	23332
<b>Gene Symbol</b>	CLASP1
<b>Uniprot ID</b>	CLAP1_HUMAN
<b>Immunogen</b>	The antiserum was produced against synthesized peptide derived from human CLASP1 at amino acid range 1171-1220
<b>Immunogen Region</b>	1140-1220 C-Term
<b>Specificity</b>	CLASP1 polyclonal antibody (Clip-Associating Protein 1) binds to endogenous Clip-Associating Protein 1 at the amino acid region 1140-1220 C-Term.
<b>Immunogen Sequence</b>	



Immunohistochemistry analysis of paraffin-embedded human testis tissue, using CLASP1 Antibody. The picture on the right is blocked with the synthesized peptide.



Western blot analysis of lysates from Jurkat cells, using CLASP1 Antibody. The lane on the right is blocked with the synthesized peptide.



Western blot analysis of SH-SY5Y cells using CLASP1 Polyclonal Antibody diluted at 1: 2000