

Anti-CIT antibody (980-1060 Internal) (STJ92296)

STJ92296

GENERAL INFORMATION

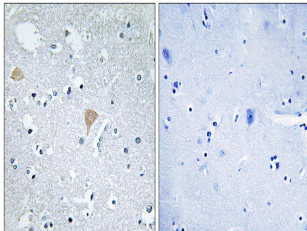
Product Type	Primary antibodies
Short Description	Rabbit polyclonal antibody anti-Citron Rho-Interacting Kinase (980-1060 Internal) is suitable for use in Immunohistochemistry, Immunofluorescence and ELISA research applications.
Applications	IHC-P, IF-P, ELISA
Host/Source	Rabbit
Reactivity	Human, Mouse

PRODUCT PROPERTIES

Clonality	Polyclonal
Clone ID	
Concentration	1 mg/mL
Conjugation	Unconjugated
Purification	The antibody was affinity-purified from rabbit anti-serum by affinity-chromatography.
Dilution Range	IHC 1:100-1:300 ELISA 1:40000
Formulation	PBS, 50% Glycerol, 0.5% BSA and 0.02% Sodium Azide.
Isotype	IgG
Storage	Store at -20°C for up to 1 year from the date of receipt, and avoid repeat freeze-thaw cycles.
Instruction	

TARGET INFORMATION

Gene ID	11113
Gene Symbol	CIT
Uniprot ID	CTRO_HUMAN
Immunogen	The antiserum was produced against synthesized peptide derived from human CTRO at amino acid range 1011-1060
Immunogen Region	980-1060 Internal
Specificity	CIT polyclonal antibody (Citron Rho-Interacting Kinase) binds to endogenous Citron Rho-Interacting Kinase at the amino acid region 980-1060 Internal.
Immunogen Sequence	



Immunohistochemistry analysis of paraffin-embedded human brain tissue, using CITRO Antibody. The picture on the right is blocked with the synthesized peptide.