

Anti-CIITA antibody (680-760 Internal) (STJ92294)

STJ92294

GENERAL INFORMATION

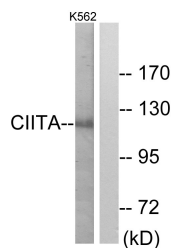
Product Type	Primary antibodies
Short Description	Rabbit polyclonal antibody anti-Mhc Class II Transactivator (680-760 Internal) is suitable for use in Western Blot and ELISA research applications.
Applications	WB, ELISA
Host/Source	Rabbit
Reactivity	Human, Mouse, Rat

PRODUCT PROPERTIES

Clonality	Polyclonal
Clone ID	
Concentration	1 mg/mL
Conjugation	Unconjugated
Purification	The antibody was affinity-purified from rabbit anti-serum by affinity-chromatography.
Dilution Range	WB 1:500-1:2000 ELISA 1:10000
Formulation	PBS, 50% Glycerol, 0.5% BSA and 0.02% Sodium Azide.
Isotype	IgG
Storage	Store at -20°C for up to 1 year from the date of receipt, and avoid repeat freeze-thaw cycles.
Instruction	

TARGET INFORMATION

Gene ID	4261
Gene Symbol	CIITA
Uniprot ID	C2TA_HUMAN
Immunogen	The antiserum was produced against synthesized peptide derived from human CIITA at amino acid range 706-755
Immunogen Region	680-760 Internal
Specificity	CIITA polyclonal antibody (Mhc Class II Transactivator) binds to endogenous Mhc Class II Transactivator at the amino acid region 680-760 Internal.
Immunogen Sequence	



Western blot analysis of lysates from K562 cells, using CIITA Antibody. The lane on the right is blocked with the synthesized peptide.